

Historic, Archive Document

Do not assume content reflects current scientific knowledge, policies, or practices.

62.41

For Beauty and Charm

All bulbs are still scarce, and to avoid disappointment, may we advise you to place your orders early.

25% deposit will hold your order—balance C. O. D. when order is shipped.

5% Cash Discount on all orders paid in full by July 5th!

Prices net after July 5th.

TERMS: Order early. All stock will be shipped at the proper planting time, and orders are filled in rotation. Send money by postal, express or bank money order, or registered mail. Unregistered currency is sent at your own risk. No charge accounts will be accepted unless customer is well known to us, and credit has been established. All orders over \$2.00 will be prepaid in full, if accompanied by remittance; smaller orders must include an additional charge of 10c to cover cost of transportation.

C. O. D. SHIPMENTS: We will book your order on receipt of 25% of the amount of the order. The bulbs will be shipped C. O. D. including transportation charges.

We will supply six of one variety at the dozen rate; 25 of one variety at the 100 rate; 250 of one variety at the 1000 rate.

Grow TULIPS

of
Surpassing
Beauty
this
easy way

Our fields will be open to visitors, even though we know fewer of you will be able to visit them.

Expected blossoming dates for our Tulips: Starting May 10th to May 30th, with the majority in bloom by May 20th.

Admired by everyone for brilliance of color and variety, beauty of shape and gorgeous display, the Tulip has also earned its place in your garden because of its hardihood and resistance to all weather conditions. Once planted, the healthy Tulip bulb seems to defy all caprices of Nature, and to thrive under circumstances far too rigorous for less sturdy flowers.

ALMOST ANY SOIL WILL DO. Practically any garden earth ordinarily used for other flowers is suitable for the Tulip. However, the bulbs should not be planted too often in the same bed without fresh soil, or without giving the bed a "rest" from Tulips now and then. There should, of course, be adequate soil drainage.

PLANT BULBS IN LATE FALL. The latter part of September, October and early November is the planting season for Tulip bulbs. Top size bulbs should be planted, bottoms down, about four inches below surface, and about six inches apart. Bulbs of lesser size can be planted closer together, but never less than four inches. After planting no further attention need be given to bulbs.

TAKE UP BULBS IN SUMMER. After its spring flowering, cut off the wilted bloom an inch or two below top of stem. A few weeks later, when leaves have turned to yellow, dig up bulbs and lay out to dry in the shade. Properly cared for, a top size bulb will yield excellent blooms for a number of years.

NELIS BULBS NEED NOT BE PAMPERED. As every Tulip lover knows, success in growing is almost entirely a matter of selecting bulbs from the right source. They should be of top size and free from blemish or disease. Nelis Domestic Tulip bulbs have all the desired qualities for best results and are so guaranteed.

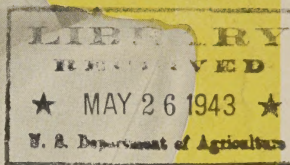
COMPLETE INSTRUCTIONS ACCOMPANY EVERY ORDER. All transportation charges are prepaid on orders of \$2.00 or more, accompanied by cash.

**Nelis
Nurseries
Inc.
Holland,
Michigan**

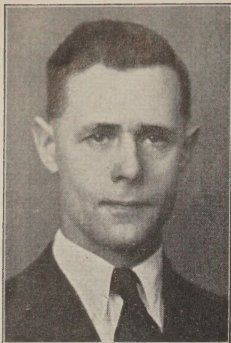
Cover Collection of CHOICE TULIPS *for Cheer and Charm*

① MATCHLESS	6 each of 5 varieties	\$ 3.75
② ANNIE LAURIE	12 each of 5 varieties	7.50
③ MISS BLANCHE	25 each of 5 varieties	15.00
④ JUBILEE	100 each of 5 varieties	55.00
⑤ GLORIA SWANSON		

1943



NELIS NURSERIES, Inc. HOLLAND, MICHIGAN



HARRY NELIS
General Manager

GREETINGS

from the City of Tulips

THERE is a time each year when the Tulip takes command of the clean, thrifty city of Holland. In years past, hundreds of thousands of people have invaded this lakeshore community to drink in the beauties of springtime's most welcome flower, and Holland has provided a daily round of festivities to entertain its guests.

But all the picturesque and entertaining festivities have been put aside for the duration, to be resumed again when victory is ours.

Meanwhile, the Nelis Nurseries, who have always played a quiet but important part in this annual Tulip Festival, will do their utmost to keep alive the culture of Tulips, which their forefathers began centuries ago. In its extensiveness of varieties and gorgeousness of color, the Nelis Tulip Farm is undoubtedly the most colorful mass display of Tulips to be seen anywhere in the world. We have planted as many Tulips as in past years, and our display will be open to the public for those that are able to come to enjoy the beauty of "Tulip Time."



Holland's Burgher-
meester, who is here
shown in his official
Dutch dress, extends
his greetings to the
many recipients of
this catalog.



Nelis Nurseries play a quiet but important part in this annual Tulip festival. Not only do we supply the millions of Tulips which are to be seen throughout the city of Holland, but our mass plantings of over 500 varieties are the chief

point of interest to the thousands upon thousands of visitors. In its extensiveness of varieties and gorgeousness of color, the Nelis Tulip Farm is undoubtedly the most colorful mass display of Tulips to be seen anywhere in the world.

AN Important MESSAGE —

FRED NELIS, Pres.
HARRY NELIS, Sec'y-Treas.



NELIS NURSERIES, Inc.

Bulb Growers Nurserymen Importers

Specializing in Tulip Bulbs

HOLLAND, MICHIGAN

April 1, 1943

DAFFODILS
HYACINTHS
LILIES
PERENNIALS
EVERGREENS
FLOWERING
SHRUBS

Dear Customer:

The year 1942 has proved to be very successful for the production of Tulip bulbs in the state of Michigan, and notwithstanding unfavorable weather conditions during part of the growing period, a very nice increase was harvested. For this reason we are confident, and feel we can now offer you an additional number of choice varieties, which during the past few years we did not have in quantities to list. Our listing of Tulips, all Michigan grown, now very nearly approaches the number of varieties we were able to offer before this war, at which time we could draw from imported stock as well as our own domestic grown bulbs.

For a number of years we have conducted deep planting tests for Tulips, and we advised our customers, during the summer of 1942, of these experiments. This deep planting method is not recommended for those who want to increase their stocks, but rather where permanency is a factor. The oldest test bulbs had been in the ground ten years, planted twelve inches deep, and continued to bloom each year, and when removed showed blooming size bulbs, but practically no bulb increase. We would be grateful to hear from anyone who has tried the deep planting method in any other state, with information on results obtained.

We would again like to draw your attention to our now extended listing of the new and better daffodils, and the large selection available in this earliest of spring flowers. They are ideal for permanent plantings, and come as the first harbingers of spring. Our supply of Hyacinths, greatly curtailed because importations were almost impossible, has been slowly built up, and are this year available in practically any color.

We also wish to take this opportunity to thank our customers for their past patronage. We will try to do our part, not without great difficulties due to present conditions, in growing and supplying the lovely flowers which show us the better things of life in this war torn world.

Yours very truly,
NELIS NURSERIES, INC.

Harry Nelis
Sec'y-Treas.

GUARANTEE

Except where clearly stated otherwise in this catalog, we unconditionally guarantee every bulb we ship out to be strictly top size, and to be absolutely true to name. All bulbs shipped by us will grow and bloom under ordinary conditions. We have, however, no control over unfavorable weather or soil conditions, improper planting, neglect, moles or mice, and therefore cannot assume responsibility after they reach you. Stock not reaching you in first class condition should be reported within 10 days after receipt, and will be replaced free of charge if so received. After ten days it is mutually agreed that stock is satisfactory. Do not return bulbs or plants unless so instructed by us.

— ORDERS FILLED AS RECEIVED

LATEST NOVELTIES

It has been our policy for years to show to the American public at our extensive display fields the latest varieties available in Tulip bulbs. Our 1943 listing is as nearly complete as can be desired, and contains varieties which probably will not be handled by the average seedsman or grower for another decade.

Practically all varieties listed have been recognized as outstanding either in Haarlem, Netherlands, or London, England. Those marked F.C.C. received a First Class Certificate; those marked A.M., an Award of Merit.



Belle Jaune



Newton



Aristocrat

	Three	Doz.	100
AMERICAN FLAG. 26 inches. F.C.C., A.M. Dark red with broad white lines and blue base. So named because the three colors resemble the American Flag. A real novelty	\$1.50	\$5.00	
ARISTOCRAT. 32 inches. A.M. Carmine-rose, with lighter edge. A Tulip whose strength and sturdiness are unsurpassed. A real giant among Tulips	2.00	7.00	
BELLE JAUNE. 26 inches. F.C.C., A.M. Without question the finest and strongest dark golden yellow Tulip, of beautiful form, producing long, egg-shaped blossoms of enormous size	1.80	6.00	
BLANCA. 30 inches. F.C.C., A.M. The finest pure white Tulip we have ever seen. The color, form and strength leaves nothing to be desired. We are fortunate to have enough stock available so we can include it in this year's offering when varieties are not too plentiful	1.50	5.00	
BLUE RIBBON. 32 inches. A.M. A tall and erect Tulip of great beauty, bluish purple with a blue center, flowers carried on a strong stem. The finest and most perfect blue-purple Tulip	1.80	6.00	
CAROLINE TESTOUT. 30 inches. One of the finest deep, pure pink Tulips, of perfect shape, with a white base. Exceptional lasting qualities.	1.50	5.00	
CHAS. NEEDHAM. 27 inches. F.C.C., A.M. A magnificent variety. The tall, stiff stem is topped with a large, bright, brilliant red flower. Very attractive, of compelling beauty	1.20	4.00	
CICERO. 24 inches. A.M. A lovely Tulip of brilliant fiery red color, with the color exceptionally intense and true. A grand and robust variety70	2.25	
CORDOVA. 30 inches. A.M. A beautiful rose with a lighter border. An unusually sturdy and attractive variety; one of the finest pinks in existence. Still very scarce	1.20	4.00	
CORNILLE. 28 inches. The charming flowers when open reveal a lovely rose-pink variety. The lighter center gives the whole flower a most pleasing appearance. The blossoms are held upright on a stiff stem, and have long lasting qualities	1.20	4.00	
DARLINGTON. 30 inches. A.M. An outstandingly large, rose-scarlet flower of cup shape, with tips of the outer petals slightly reflexed. One of the finest	1.80	6.00	
FANCY. 27 inches. Golden yellow flames on a background of coppery orange, with an olive-green base. Yellow pistils and dull violet anthers. Open or partly closed, the flower is magnificent85	2.75	
GLORIOSA. 31 inches. A.M. A beautiful bluish purple, changing to a lighter edge. An outstandingly tall and attractive variety for the garden	1.05	3.50	26.00
GOLDEN HARVEST. 28 inches. A.M. Lovely deep lemon-yellow flower of large size and great substance, on a tall, stiff stem. A very delicate shading of green through the coloring of this flower makes it one of the rarest and loveliest of all. Highly recommended80	2.75	

NOVELTY TULIP COLLECTION

1 each of 26 latest novelties (all separately labeled) . . . \$10.00

3 each of 26 latest novelties (all separately labeled) . . . \$27.50



and PRIZE-WINNING TULIPS

	Three	Doz.	100	
HELEN MADISON. 31 inches. A.M. A tall luminous rose color. Outstandingly beautiful new novelty, a valuable addition to any collection.....	\$1.20	\$4.00		
ITEA. 30 inches. A brilliant new novelty of a strikingly gorgeous orange-red. So impressive, it lingers in your memory, and is not easily forgotten when once seen.....	.75	2.50		
JAN TOOROP. 28 inches. Deep, clear purple, with white base. Handsome, large flower, carried on a tall stem. Outstandingly lovely variety.....	.75	2.50		
KATHLEEN PARLOW. 30 inches. A.M. Bright silvery rose; a very delicately colored blossom, carried on a tall stem. Highly recommended for the garden. Slightly fragrant.....	.60	2.00		
KING MAUVE. 30 inches. A.M. An unusually lovely Tulip, of distinctly different coloring. The magnificent bloom of delicately pale lavender, with deeper lavender or purplish flush, reveals when open a beautiful blue and white halo at the base. Flower is very large and substantial, with graceful stem.....	.75	2.50		
MR. HOOVER. 27 inches. Beautiful new shade of clear purple; very strong and sturdy plant, a most valuable addition in this color. Recommended.....	.70	2.25		
NEWTON. 33 inches. A glorious Tulip of rare beauty, of new deep bluish purple. A cup-shaped blossom of intense, true coloring, which excels for exhibition purposes.....	.80	2.75		
RIVIERA. 30 inches. A.M. This desirable Tulip is considered the best of its color. A tall variety, with a large cup of soft lilac, it is greatly admired by our Tulip Time visitors. Its moderate price should be a great stimulus to its use.....	1.05	3.50	26.00	
		Three	Doz.	100
SCARLET LEADER. 29 inches. F.C.C., A.M. Its name expresses its appearance perfectly. Color is of beautiful fiery scarlet, without any markings. We find this variety a wonderful improvement of the still better known variety, Scarlet Beauty.....	\$0.90	\$2.90	\$20.00	
SOUTHERN CROSS. 31 inches. A delightful blend of sulphur-yellow, changing to golden yellow, flushed warm apricot, inside golden yellow. Fine exhibition variety of unusual attraction.....	.60	2.00	15.00	Scarlet Leader
WALLSTREET. 30 inches. F.C.C., A.M. One of the newest additions in tall lemon-yellows; with yellow stamens. In our opinion, far superior to Yellow Giant.....	1.05	3.50	26.00	
WHITE DUCHESS. 28 inches. A.M. Snow-white, with broad, slightly ruffled and recurving petals, which are flushed soft green in center. A large, graceful and artistic flower, carried on a strong, tall stem.....	.90	3.00		



Southern Cross

Bianca

Nelis Giant May-

The modern Giant May-Flowering Tulip is the result of three separate experiments of Tulip breeding, formerly classified as Darwin, Cottage and Breeder Tulips. Through the interbreeding of the three before-mentioned classes, the terms Darwin, Cottage (or Hybrid) and Breeder Tulips still listed in some catalogs have become so confusing that even among the best informed there are many clashes of opinion. Since the modern Giant May-Flowering Tulips contain the blood of all the three preceding crosses in proportions unknown to even the plant breeders themselves, it seems useless to maintain this class distinction any longer, as they are both scientifically and practically absolutely meaningless. We, therefore, will list them from now on as Giant May-Flowering Tulips. The term May-Flowering is based on our Michigan climate, and in southern locations the blooming period will, of course, be earlier. In revising our list for 1943, we have eliminated many varieties, which we have considered to be surpassed by later introductions.



Ambrosia



	Three	Doz.	100
ADMIRAL TROMP. 29 inches. Beautiful new shade of salmon-orange, with a narrow yellow edge, very free blooming, with a large, strong flower	\$0.60	\$1.90	\$14.00
ADVANCE. 28 inches. A glorious orange-scarlet Tulip of tremendous size; a wonderful novelty, a must for every collector90	3.00	
*AFTERGLOW. 26 inches. A cup-shaped flower of clear dark salmon, edged light orange. This excellent variety makes a gorgeous effect if planted in masses with blue ground cover40	1.35	10.00
*ALBINO. 24 inches. Beautiful pure white flower, with white stamens. Ideally suited where a short but sturdy white is desired55	1.75	13.00
ALICE KEITH. 27 inches. A beautiful flower of bright reddish orange, changing to rich buff-orange, terra cotta veined. An outstanding variety55	1.85	14.00
*ALLARD PIERSON. 27 inches. A lovely variety with a beautiful dark crimson-maroon blossom40	1.35	10.00
*AMBROSIA. 28 inches. Hybrid novelty; bronze with rosy lilac, salmon-orange inside; a pleasing blend that harmonizes with many colors40	1.35	10.00
*ANNIE LAURIE. 22 inches. A delicately soft pink with bright yellow stamens, related to the well-known variety Clara Butt, but of a lighter shade. The color is best described as "baby-pink"40	1.35	10.00
ANTON MAUVE. 30 inches. Clear violet with soft grayish white edge. A fine and strong exhibition variety, and highly recommended50	1.65	12.00
*APRICOT. 28 inches. Light bronze flower, apricot shaded, olive base. Very showy50	1.70	12.50
*ARGO. 24 inches. Deep golden yellow, mottled red, which deepens as the flower ages40	1.35	10.00
ASTRA. 31 inches. A rich rose-violet with large blue center. A magnificent Tulip with an extra strong stem and flower70	2.25	

The varieties marked with an asterisk (*) may be purchased in a bulb one size smaller, at 20% discount.



Dream



Advance

Flowering TULIPS

	Three	Doz.	100
AVALANCHE. 28 inches. Best late pure white Tulip, with white stamens. Flowers are large and cup-shaped, on a strong, erect stem			
*AVIS KENNICOTT. 26 inches. Long, yellow flower with striking black base and anthers; contrasts beautifully with any blue flowers. Commands attention wherever seen . . .	\$0.60	\$2.00	\$15.00
BACCHUS. 32 inches. Dark plum color. Large egg-shaped flower. A beautiful garden variety with no superior40	1.35	10.00
BARBARA PRATT. 30 inches. Cochineal-carmine, with lilac-rose edge; very tall and sturdy plant, pleasing color blossom60	1.90	14.00
*BARONNE DE LA TONNAYE. 26 inches. Carmine-rose blossom, with a soft pink edge, long large flower, and very popular60	2.00	
*BARTIGON. 24 inches. Fiery crimson with white base; very strong grower. One of the best in this color40	1.25	9.00
BELLA DONNA. 28 inches. Lovely crimson-red with a greenish blue center. Very large flower carried on a strong stem40	1.30	9.50
BEVERLY. 27 inches. It is one of the finest of the new orange shades, a real flame-orange, with slightly reflexed petals50	1.65	12.00
*BLACK EAGLE. 29 inches. The cup-shaped flower is of great size and of intense deep purple, with a deep blue base, and black anthers. One of the richest and most brilliant intense deep purples, acquiring a beautiful sheen when in full sun. Try to combine it with pure white or yellow Tulips70	2.25	16.00
*BLEU AIMABLE. 26 inches. Blue-violet changing to a charming blue as the flower ages. A very distinct and handsome Tulip; late70	2.25	17.00
BLEU CELESTE. 30 inches. Dark heavenly blue, strong and sturdy. Highly recommended40	1.35	10.00
*BRONZE KING. 24 inches. Golden brown-olive, yellow base75	2.50	
*BRONZE QUEEN. 28 inches. Soft buff, inside tinged golden brown. A very lovely variety55	1.80	13.00
*CARDINAL MANNING. 32 inches. A rich wine-red with a golden flush which is just in its glory when most other varieties have passed; strong bloomer35	1.15	8.50
*CARRARA. 28 inches. Flowers round and pure white as the marble from which it has its name. Finest white45	1.50	11.00
CENTENAIRE. 28 inches. Rich violet-rose with large blue center. A magnificent Tulip for the border50	1.75	12.50
CHESTER J. HUNT. 31 inches. Violet changing to purplish blue; white base. A tall, stately flower of graceful habit, regarded by us as one of the best purple Tulips among the medium priced varieties35	1.25	9.25
*CITY OF HAARLEM. 29 inches. Bright glittering scarlet with steel-blue base; one of the best scarlet Tulips for forcing or bedding60	2.00	15.00
	.55	1.85	13.50

The varieties marked with an asterisk (*) may be purchased in a bulb one size smaller, at 20% discount.



Clara Butt



Allard Pierson



City of Haarlem



Nelis Giant May-Flowering Tulips

	Three	Doz.	100
*CLARA BUTT. 22 inches. Clear salmon-pink, a beautiful and charming bedding Tulip			\$0.90 \$ 7.00
COLUMBUS. 24 inches. Golden yellow, heavily flamed with red stripes, an unusual color, distinct from all others. Sweet scented70	2.25	16.50
COPERNICUS. 28 inches. Dark coppery bronze and old rose. New and unusual color combination50	1.75	12.50
COQUELIN. 32 inches. Especially tall new rose-colored Tulip of great merit. Strong growing variety60	2.00	
DARWIN ECLIPSE. 28 inches. The most perfect crimson Tulip in existence today; a glorious color of perfect shape and form, and without any defect75	2.50	19.00
*DIDO. 28 inches. Salmon-orange, inside orange with yellow base; considered one of the finest ever introduced; fragrant45	1.50	11.00
*DILLENBURG. 28 inches. A new variety best described as a glorious salmon-orange, with large, showy, well-formed flowers of great substance. A great favorite with our Tulip Time visitors40	1.35	10.00
DON PEDRO. 27 inches. A beautiful shade of coffee-brown, shaded maroon; an unusual color. Fragrant50	1.75	13.00
*DREAM. 27 inches. Light heliotrope of large size, the color is soft, but lasts very well45	1.50	11.00
*DUCHESS OF HOHENBERG. 29 inches. Pale slaty lilac-mauve, heliotrope striped; the finest in its class. Blends beautifully with white Violas or Forget-me-nots45	1.50	11.50
*DULCINEA. 24 inches. A beautiful shade of satin-rose; long, erect flower; a most satisfactory bedding Tulip ..	.40	1.25	9.50
*EARLY DAWN. 28 inches. Deep lemon-chrome with a light flush of pale purple on the outer segments45	1.50	10.50
*ECLIPSE. (Lily-Flowered.) 27 inches. Orange-yellow; one of the finest of the new Hybrid Tulips30	.95	7.50
*ELLEN WILLMOTT. 22 inches. Long, pointed blooms of pale primrose-yellow; deliciously fragrant30	1.10	8.00
FAIRY QUEEN. 20 inches. Soft heliotrope, margined amber-yellow; distinctly different55	1.75	
*FARNCOMBE SANDERS. 26 inches. Scarlet, with a rosy gloss. Broad-petaled flower of perfect shape35	1.15	8.00
FASCINATION. 26 inches. Brilliant crimson-red with purplish shading on outer petals, exceptionally useful and showy garden variety of great merit50	1.75	12.50
*FAUST. 30 inches. Dark satiny purple with white base. Enormous flower of fine form, quite the best in its color. Highly recommended50	1.65	12.00
FLAMINGO. 28 inches. Shell-pink, oval shaped and pointed flower. A lovely variety, recommended45	1.50	11.00
FORMOSA. 18 inches. Green with yellow border; large flower. An unusual color combination75	2.50	
GEISHA. 28 inches. A flower of a color difficult to describe. It has been described as pale violet and buff, changing into a grayish lilac. We would rather call it a dove color, purple inside. A very pretty and attractive variety70	2.25	16.50

The varieties marked with an asterisk (*) may be purchased in a bulb one size smaller, at 20% discount.



Inga Hume



Louis XIV



Mrs. Ethel Telling

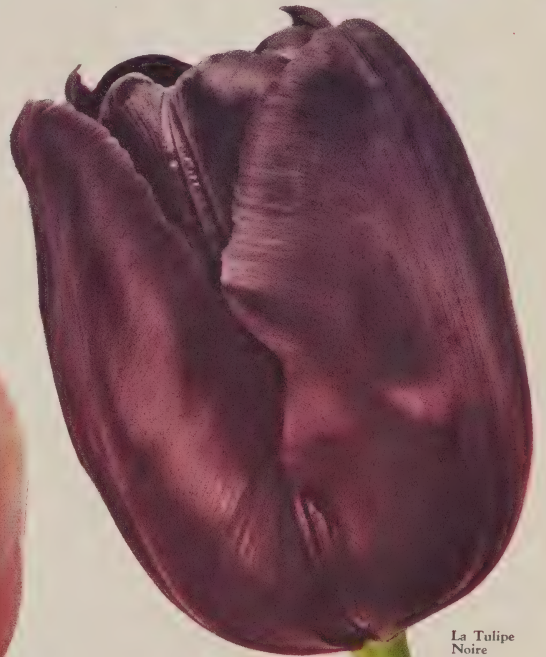
Nelis Giant May-Flowering Tulips

	Three	Doz.	100
GENERAL FRENCH. 27 inches. Beautiful shade of cerise-red, blue base. Extra large and sturdy flower	\$0.40	\$1.35	\$10.00
*GESNERIANA LUTEA. 24 inches. Rich golden yellow; a flower of perfect form; delightfully sweet scented. Try planting with blue flowers	.35	1.10	8.00
*GESNERIANA SPATHULATA. 24 inches. This variety remains the outstanding medium priced red; graceful, strong-stemmed, sparkling. Touched by sunlight, it opens wide to display the brilliant orange and unique blue base	.45	1.50	11.00
GIANT. 29 inches. Deep rich purple, violet shaded; very large and sturdy flower	.50	1.65	12.00
GLARE OF THE GARDEN. 17 inches. Long flower of dazzling scarlet, and of immense size. Considered the best crimson of the late Tulips. Wonderful planted in front of evergreens	.55	1.75	13.00
*GLORIA SWANSON. 32 inches. An enormous flower of a pleasing shade of American-Beauty-red, with bluish base. One of the largest flowers in this color	.50	1.65	12.50
*GOLDEN AGE. 26 inches. Bright golden yellow faintly overlaid with orange, strong grower, beautifully shaped; among the many new yellow May-Flowering Tulips of recent introduction, this is considered the finest	.90	3.00	22.00
GOLDEN BRONZE. 26 inches. Old gold, slightly flushed heliotrope, with olive base	.50	1.75	13.00
GOLDEN FLEECE. 22 inches. Medium-sized, bright yellow flowers, with petals slightly tipped brown, black anthers	.40	1.25	9.00
*GOLD LAKE. 30 inches. Among the new yellow Darwins it is outstanding. The large deep golden yellow cup-shaped flower has a slight blending of bronze at the center of petal which enhances its coloring. Flowers are large and tall, on a strong plant. We consider it one of the best in the deep yellow Darwins	.60	2.00	15.00
*GRENADIER. 21 inches. Dazzling vermilion-orange; very striking color. Excellent in clumps in the border as outstanding bright spots in the color scheme	.45	1.50	11.00
*G. W. LEAK. 28 inches. Brilliant flowers of geranium-scarlet, of compelling beauty. The tips of the petals turn downwards, showing the lovely pale base. This tall, strong variety is ideally suited for American climate	.70	2.25	
INGA HUME. 26 inches. Red with sharply broad-line yellow edge; inside deep yellow, slightly sprayed red	.75	2.50	
*INGLESCOMBE YELLOW. 22 inches. Clear golden yellow. One of the best known May-Flowering yellows, has given universal satisfaction	.90	6.75	
*ISABELLA. 18 inches. Carmine-rose shaded creamy white. A splendid bedding Tulip	.35	1.25	9.50
JEANNE DESOR. 26 inches. This highly recommended variety is a deep golden yellow, with a clear scarlet edge, which remains this way until the petals drop. This striking color contrast is very pleasing. Bulbs produced are generally smaller in size than those of many other varieties.	.50	1.75	13.00

The varieties marked with an asterisk (*) may be purchased in a bulb one size smaller, at 20% discount.



Marjorie Bowen



La Tulipe Noire



Early Dawn





Fascination



White Giant



Yellow Giant

Nelis Giant May-Flowering Tulips

	Three	Doz.	100
JUBILEE. 31 inches. Bright blue-purple variety with white base, marked blue. A large flower of superb form and splendid carriage, with excellent lasting qualities	\$0.50	\$1.75	\$13.00
*KING GEORGE V. 30 inches. Sparkling salmon-scarlet, shaded bright rose; enormous flower of perfect form; tall and heavy stem. Recommended for exhibition purposes40	1.35	10.00
*KING HAROLD. 28 inches. Crimson-maroon, with a blue base; effective in partial shade30	1.10	8.00
LA FIANCEE. 30 inches. Deep rose, shading to old rose and delicate pink at the edges; of very large size, effective when planted with mauve and dark lavender varieties45	1.50	11.00
LA MERVELLE. 20 inches. Orange-cherry flushed rose; deliciously scented; graceful and ideal for table decoration35	1.25	9.50
LA SALLE. 26 inches. This variety opens creamy white and becomes a pure white as the flower ages. Black anthers and straight strong stem50	1.75	12.50
LA SINGULIERE. 28 inches. Opening silvery white, heavily flushed at margin with dark crimson; this color suffuses the whole flower as it ages. Very unusual50	1.80	
*LA TULPE NOIRE. 26 inches. The nearest approach to the so-called Black Tulip; deep maroon-black with a velvet sheen. The darkest in the medium-priced varieties45	1.35	10.00
*LAVENDA. 29 inches. Extra large clear purple flower on a very strong stem. A worth-while addition to any collection50	1.75	13.00
*LILAC WONDER. 26 inches. Soft syringalilac, white center. This variety does not fade, even when planted in full sunshine50	1.75	13.00
*LOUISE DE LA VALLIERE. 26 inches. Brilliant cherry-rose, with blue base. Large, oval, cup-shaped flowers; a very attractive and strong grower. Splendid for exhibition45	1.50	11.00
*LOUIS XIV. 32 inches. Rich purple, with an edge of golden bronze, producing a fine blending of tone. Immense flower, and a great favorite50	1.75	12.50
*MADAME BUTTERFLY. 29 inches. An outstanding novelty, the likes of which are but seldom seen. Strong, with a magnificent egg-shaped flower, making a beautifully proportioned plant. The color is purple, changing to silvery lavender and gray. A sensation at our annual Tulip display60	2.00	15.00
*MARJORIE BOWEN. 31 in. A beautifully shaped flower of a color difficult to describe; it consists of buff, salmon and orange shades, which change to rose-pink as the flower ages. A beautiful and outstandingly graceful variety75	2.25	16.00
MARVEL. 20 inches. A very distinct, sweet scented variety. Inside old gold, outside salmon-rose, edged yellow, a fine and lovely Tulip. Its different and unusual coloring makes it highly desirable50	1.65	12.50
MERMAID. 30 inches. Delicate flesh-pink with lighter border; a tremendous oval-shaped flower; fine lasting qualities45	1.50	11.00

The varieties marked with an asterisk (*) may be purchased in a bulb one size smaller, at 20% discount.

"MOST POPULAR" COLLECTION

This collection has been compiled from orders placed at our display fields by our "Tulip Time" visitors, as the most outstanding and popular varieties. This collection will give you a complete range of color.

- Allard Pierson. Maroon.
- Argo. Yellow mottled.
- Carrara. White.
- Dillenburg. Orange blend.
- King Geo. V. Rose.
- La Tulipe Noire. Black.
- Madame Butterfly. Lavender blend.
- Panorama. Brick-red.
- Rosabella. Pink.
- Yellow Giant. Yellow.

6 each of these 10 varieties (60 bulbs) \$7.50
 12 each of these 10 varieties (120 bulbs) 14.25
 25 each of these 10 varieties (250 bulbs) 27.00
 100 each of these 10 varieties (1000 bulbs) 98.50

Nelis Giant May-Flowering Tulips

Three Doz. 100

*MOONLIGHT, 24 inches. Best pale yellow Tulip, lovely when planted among Iris or Bleeding Hearts. Long, oval-shaped flowers	\$0.50	\$1.75	\$12.50
MOTHER'S DAY, 28 inches. A tall, soft lemon-yellow, and a late bloomer. A very fine Tulip for the garden60	1.90	14.00
*MRS. ETHEL TELLING, 30 inches. (A Nelis Introduction.) A brilliant carmine-crimson, having a beautiful satiny sheen. A very large, oblong and imposing flower on a tall, strong stem. An outstanding new novelty which when once seen is firmly fixed in memory. Named in honor of Mrs. Ethel Telling, former chairman of the Holland, Michigan, Tulip Time Committee, for her untiring efforts in promoting and directing this great floral festival60	2.00	15.00
MRS. JOHN T. SCHEEPERS, 24 inches. One of the largest bright yellow Tulips, oval-shaped flower, carried on a straight stem. Highly recommended	1.80	6.00	
MRS. MANDEL, 26 inches. One of the new outstanding purples, with a decided blue cast, having a good sturdy stem and a long flower45	1.50	11.00
*MRS. MOON, (Lily-Flowered.) 25 inches. This is beyond a doubt one of the finest late yellow Tulips; vase-shaped, with pointed petals; distinctly perfumed. Highly recommended45	1.50	11.00
MRS. POTTER PALMER, 28 inches. A beautiful purple Tulip; well formed and pleasing; very attractive for border planting50	1.65	12.00
*MR. VAN ZYL, 25 inches. A glorious dark rose-colored Tulip with a broad white border; lovely clear and bright interior. A splendid new novelty which we can well recommend60	1.90	15.00
*ORANGE KING, 23 inches. Deep orange-rose, inside of cup orange-scarlet with yellow center, graceful and sweet-scented ..	.45	1.35	10.00
OSLO, 32 inches. Deep rose, shading to old rose, delicate pink at edge, blue base. Huge handsome flower on tall stem60	2.00	15.00
*PANORAMA, 25 inches. Among the older varieties, this Tulip has been able to hold its own. Its flower is beautiful coppery orange, with olive-green base. Has very long lasting qualities50	1.65	12.00
*PEKING, 26 inches. A tall golden yellow Tulip, with the center of the petals sprayed orange. Handsome flowers of good substance, fine for the garden40	1.35	10.00
PERSEUS, 26 inches. A novelty of great beauty, color flame-orange. The outside of the petals have green markings like the Parrot Tulip Fantasy. A lovely variety, and a profuse bloomer.60	1.90	14.00

The varieties marked with an asterisk (*) may be purchased in a bulb one size smaller, at 20% discount.



Toplight



Mr. Van Zyl



Madame Butterfly



Scarlet Emperor

Watson

Nelis Giant May-Flowering Tulips

	Three	Doz.	100
PICOTEE. (Lily-Flowered.) 20 inches. Snow-white with a margin of rose; pointed and reflexing petals.	\$.45	\$1.50	\$11.00
PINK PEARL. 26 inches. Lilac-pink on a white ground, inside rose; an unusually fine Tulip and the only one in this color	.50	1.75	13.00
* PRIDE OF HAARLEM. 27 inches. Brilliant American-Beauty-red, most popular Darwin; sweet-scented	.35	1.25	9.00
PRIDE OF ZWANENBURG. 28 inches. F.C.C., A.M. A beautiful salmon-rose Tulip with a narrow margin of blush-rose at margin. Except for the pale margin it resembles a glorified Clara Butt in color, producing a wonderful, tall, salmon-pink bloom, for which every connoisseur has been looking for years	.95	3.25	24.50
* PRINCE OF ORANGE. 26 inches. Dark terra cotta, changing to orange-yellow. Among the latest varieties it is outstanding. Stands up remarkably well during warm weather; strong and sturdy	.45	1.50	11.00
* PRINCESS ELIZABETH. 26 inches. Clear deep pink, changing to rose-pink. It's lovely, with a well-shaped flower giving it added attraction	.35	1.15	8.50
PROF. RAUWENHOF. 28 inches. Cherry-rose with ivory-white and blue star at base; flower of enormous size; excellent forcer	.40	1.25	9.00
* QUEEN OF SPAIN. 28 inches. A very fine Tulip of yellow, edge of petals flushed apricot-orange. Flower is carried on a good, strong stem. A very fine variety	.40	1.35	10.00
QUEEN OF THE SPRING. 24 inches. Large egg-shaped blossoms of a blending of orange and scarlet. The handsome flowers give a fine color attraction	.75	2.45	
RAPHAEL. 30 inches. Crimson, overlaid with violet, resulting in a beautiful wine color	.50	1.75	12.50
RED AND SILVER. 24 inches. A splendid new novelty which becomes more beautiful as the flower ages. It is a combination of silvery white and red stripes, making a very striking effect. Highly recommended for decorative purposes	.75	2.50	
REMEMBRANCE. 28 in. Slaty violet with dull smoky base; a lavender that does not fade. A fine Tulip	.40	1.25	9.50
* ROSABELLA. 27 inches. Very soft rose, with lighter edge, shaped like and resembling a rosebud. We recommend this	.50	1.75	13.00
ROSEA PERFECTA. 28 inches. A clear salmon-rose. One of the finest new pink Darwins of latest introduction	.50	1.75	12.00
SALMON QUEEN. 24 inches. Soft rose-pink with salmon flush, which becomes more beautiful as the flower ages. Beautiful cut flower	.35	1.15	8.50
* SCARLET BEAUTY. 28 inches. Beautiful fiery scarlet without any marking; one of the best reds for outside planting. Tall, straight stem of lasting quality	.60	2.00	14.00
SCARLET EMPEROR. 26 inches. This brilliant Tulip has for the past ten years been our most outstanding Tulip. Regardless of weather conditions, it has, year after year, proved unsurpassed. Long, oval-shaped flower of brilliant, lively scarlet, yellow base. The color is of such brilliance that it attracts attention from a great distance	.75	2.45	18.00
SIRENE. (Lily-Flowered.) 25 inches. Rich rosy pink with pale pink at the margins. A great exhibition flower of exquisite beauty, which retains its vivid color until petals fall. Use with blue Forget-me-nots	.40	1.20	8.00

The varieties marked with an asterisk (*) may be purchased in a bulb one size smaller, at 20% discount.

Nelis TULIP CITY Collection

A RARE BARGAIN IN MAY-FLOWERING TULIPS

These bulbs are of special home garden grade, all fine named varieties of flowering size for outdoor and mass planting. We do not recommend this size for forcing, and they are smaller than the bulbs listed on other pages of this catalog. We recommend them as a real bargain, and we can supply them in the following varieties:

- Bronze Queen. Bronze.
- Clara Butt. Salmon-pink.
- Early Dawn. Yellow-chrome.
- Farncombe Sanders. Light scarlet.
- Grenadier. Orange.
- Inglescombe Yellow. Yellow.
- Isabella. Pink and white candy stripe.
- King Harold. Maroon.
- Philippe de Commines. Black.
- Wm. Copeland. Lavender.

}	50 flowering size bulbs, 5 each of 10 varieties—	\$2.49
	100 flowering size bulbs, 10 each of 10 varieties—	4.79
	250 flowering size bulbs, 25 each of 10 varieties—	11.19
	1000 flowering size bulbs, 100 each of 10 varieties—	42.89



(At the close of the season we may be sold out of a certain variety, therefore we wish to reserve the right to substitute with varieties of the same color if possible. Order early to receive the varieties named.)

Nelis Giant May-Flowering Tulips

Three Doz. 100

SIR HARRY. 26 inches. A most beautiful lavender-pink Tulip; keeping its color well in very hot weather	\$0.45	\$1.60	\$12.00
STANJA. 26 inches. A real prize-winner, with a large, canary-yellow blossom of oval shape, carried on a straight stem. One of the finest yellows now available	.75	2.50	18.00
*SUNDEW. 25 inches. Cardinal-red of great beauty, with finely cut fringed edge. Unusual and different, and highly recommended	.45	1.50	11.00
THE BISHOP. 29 inches. Purest heliotrope-violet shade; the finest Darwin of this color. Plant in a carpet of yellow Pansties for breath-taking effect. This desirable variety is well recommended	.60	2.00	15.00
*TOPLIGHT. 26 inches. A delightful sulphur-yellow Tulip, inside dark lemon-yellow with yellow anthers, changing to creamy yellow as the flower ages. Large, cup-shaped flower	.60	2.00	15.00
*TURENNE. 28 inches. Purplish brown and violet with a broad margin of soft bronzy yellow. When this variety opens it is deep purple, changing daily to a golden bronze. The flower produced is very large and handsome, and of unusual color	.45	1.50	11.00
TURNER. 27 inches. Carmine-red shaded rose; tremendous flower, carried on a tall and strong stem. Recommended	.45	1.50	11.00
*VENUS. 30 inches. This flower has a cup of deep, satiny rose-pink, with white base. One of the finest of the tall, deep pink varieties. Blue flowers make a fine companion plant	.50	1.65	11.50
VICTOR. 27 inches. An outstanding lively color of orange-red; a tall variety of a shade seldom seen in the May-Flowering type	.60	2.00	15.00
*VULCAIN. 26 inches. Apricot with a broad margin of buff-yellow, unlike any other Tulip in color. Outstanding variety	.40	1.40	10.50
WALTER T. WARE. 22 inches. The richest yellow Tulip in existence; slightly shaded orange. A delightful garden variety	.60	2.00	
WATSON. 29 inches. A really fine golden yellow Darwin. This variety has shown up very well on our trial ground, being of a fine rich color. Well recommended	.60	2.00	14.00
*WHITE GIANT. 30 inches. A lovely white Darwin of correct Darwin shape, with a strong, straight and tall stem. Without question one of the best white Tulips	.80	2.65	20.00
WHITE RAVEN. 30 inches. A delightful ivory-white, inside lemon-yellow, with yellow anthers. Excellent for exhibition purposes. The large oblong flower is carried on a tall strong stem. Highly recommended	.75	2.50	18.00
*W. J. SANGER. 30 inches. New tall white Tulip which has proved to have exceptionally long blooming qualities. We recommend this new white variety very highly	.60	2.00	14.00
*WM. COPELAND. 24 inches. Bright violet; beautiful and early-forcer. When forced, the flowers are of purest lavender	.85	6.50	
*WM. PITT. 24 inches. Very dark crimson, of greatest size and beauty. Excellent for forcing	.35	1.15	8.50
*YELLOW EMPEROR. 26 inches. A brilliant golden yellow flower of great beauty, rather oval-shaped blossom. Is considered by many to be among the best of the yellow varieties. Ideal if planted with blue Forget-me-nots	.90	3.00	22.00
*YELLOW GIANT. 29 inches. A tall, golden yellow Darwin of good substance, with a medium sized flower, black anthers. Much taller than many yellow Tulips. Highly recommended.	.45	1.40	10.50
*YELLOW PERFECTION. 26 inches. A large flower of olive-yellow, with yellow edge	.40	1.20	9.00
ZWANENBURG. 29 inches. A pure white Tulip with black anthers. A good white for many purposes	.50	1.70	12.50

The varieties marked with an asterisk (*) may be purchased in a bulb one size smaller, at 20% discount.



Pride of Zwanenburg



Rosabella



Wolverine

New and Splendid Giant Flowering

This new race, which blooms about eight days earlier than the Darwin type, is becoming better known every year, and during our annual Tulip show more and more people are becoming interested in it. The average height is shorter than the Darwins, but they are of extremely sturdy growth, and therefore are excellent for bedding purposes. The varieties we have listed here are among the best.

The varieties which are shown in black type are outstanding novelties in this class. Tulip fanciers should try some of these, heretofore reserved for Tulip Time visitors only.

Denbola



Adoration. 22 inches. A charming vivid scarlet with a large white base which is veined with fine blue stripes. We found this variety to be a real beauty, with exceptionally long blooming period. \$1.00 per 3; \$3.50 per doz.

Alberio. 24 inches. Deep wine-red, narrow edge of flesh-pink, very large flower and very sturdy. 45c per 3; \$1.50 per doz.; \$11.00 per 100.

Algieba. 24 inches. A cheerful shade of light lavender with rosy lavender through center of petals, a striking color; strong grower. 50c per 3; \$1.75 per doz.; \$13.00 per 100.

***Amidonette.** 24 inches. Another rose-pink variety with a narrow white border around the outer edge of the petals. The very large flowers are long lasting, making an excellent garden variety. 75c per 3; \$2.25 per doz.

***Cambrinus.** 26 inches. Lilac-mauve with slaty suffusion; inside darker with apricot overcast, white base. A strong flower and a free bloomer. 45c per 3; \$1.50 per doz.; \$11.00 per 100.

Crown Imperial. 20 inches. Bright mahogany with golden yellow edge. Very attractive. 50c per 3; \$1.75 per doz.

Denbola. 20 inches. Dark ruby-red with a broad creamy edge; large round flower of great substance. This variety has become a great favorite. 90c per 3; \$3.00 per doz.; \$22.00 per 100.

Dresden China. 26 inches. Lovely pink flower carried on a very tall, straight stem. The well chosen name is indicative of the unusual coloring. It is a very bright Tulip that draws immediate attention in a collection. \$1.15 per 3; \$4.00 per doz.

Dr. Streseman. 24 inches. A sturdy flower of extraordinary beauty; the center of petals creamy white, bordered with a lively cherry-rose, making a very distinct contrast. One of the very finest. 70c per 3; \$2.25 per doz.; \$16.00 per 100.

***Elizabeth Evers.** 24 inches. A tremendously large flower of fuchsia-red, with a very soft silvery suffusion, base white and feathered. Very strong grower, and the flower lasts for a long time. 55c per 3; \$1.85 per doz.; \$14.00 per 100.

Excelsior. 24 inches. The flower is vermilion, streaked with orange, a very nice variety which produces an excellent cut flower. 45c per 3; \$1.50 per doz.; \$11.00 per 100.

Gladstone. 26 inches. Extra large flowers of soft clear purple. Makes a grand showing if planted with golden yellow flowers, such as Ursa Minor. 95c per 3; \$3.50 per doz.

The varieties marked with an asterisk (*) may be purchased in a bulb one size smaller, at 20% discount.

GIANT TRIUMPH COLLECTION

Cambrinus. Lilac.	Rhineland. Yellow, red blend.
Kansas. White.	Scarlet Admiral. Scarlet.
Mr. Kerbert. Pink and white.	Ursa Minor. Yellow.
3 each of varieties listed (18 bulbs)	\$ 2.85
6 each of varieties listed (36 bulbs)	4.90
12 each of varieties listed (72 bulbs)	9.50
25 each of varieties listed (150 bulbs)	18.00

Mr. Zimmerman

TRIUMPH TULIPS

- ***Kansas.** 22 inches. Snow-white with lemon-yellow base, and yellow stamens. One of the best white Tulips for outdoor planting. 45c per 3; \$1.50 per doz.; \$11.25 per 100.
- ***King of the Reds.** 16 inches. Deep crimson-red with salmon gloss, of medium height and striking appearance. Golden yellow base. 45c per 3; \$1.50 per doz.; \$10.50 per 100.
- ***Korneforus.** 25 inches. Brilliant carmine-red. Really an ideal Triumph Tulip, and its brilliant coloring strikes one's immediate attention. 55c per 3; \$1.90 per doz.; \$14.00 per 100.
- Lord Carnarvon.** 20 inches. Beautiful salmon-pink with distinct edge, and a white base. 40c per 3; \$1.20 per doz.; \$8.75 per 100.
- Michigan.** 22 inches. Fine clear purple flower; one of the best purples. Lasts a long time, does not fade or change color. May be planted in full sun. 55c per 3; \$1.75 per doz.
- Mississippi.** 20 inches. Brilliant cardinal-red, with blue and white base. A sturdy and strong variety. 45c per 3; \$1.50 per doz.
- ***Mr. Kerbert.** 22 inches. An outstanding Tulip of fine shape and form, of a glowing pink, with white border. 45c per 3; \$1.50 per doz.; \$10.50 per 100.
- ***Mr. Zimmerman.** 20 inches. Light fuchsia-red, soft silvery reflection at edge; of fine shape. 45c per 3; \$1.45 per doz.; \$10.75 per 100.
- Nova.** 22 inches. Another extraordinary Tulip, producing a large flower on a strong and sturdy stem. The color is lilac-rose with a silvery sheen, inside vermilion to salmon-rose, base canary-yellow. Highly recommended. 60c per 3; \$2.00 per doz.
- Pres. von Hindenburg.** 24 inches. Purplish garnet-red with yellow edge; large and strong flower that lasts a long time. Highly recommended. 80c per 3; \$2.75 per doz.
- Prof. Tendeloo.** 20 inches. American-Beauty-red, flushed with violet, with lemon-yellow edge, making a striking contrast. A very vigorous grower. 45c per 3; \$1.50 per doz.; \$10.75 per 100.
- ***Red Flame.** 20 inches. When the flower first opens it is a pure yellow with a scarlet blotch on each petal, which enriches in color as the flower ages. 45c per 3; \$1.50 per doz.; \$11.50 per 100.
- ***Rhineland.** 22 inches. Oblong flower with slightly reflexing petals of scarlet, with a distinct yellow edge. 40c per 3; \$1.35 per doz.; \$9.00 per 100.
- Ribera.** 22 inches. A very unusual color, opens creamy white, becoming mottled with red as flower ages, black center and black stamens. A strong growing variety. 50c per 3; \$1.65 per doz.; \$12.00 per 100.
- Rubin.** 23 inches. A very lovely Tulip of clear American-Beauty-red; large flower, perfectly shaped, and of ideal form. This variety is still very scarce. \$1.20 per 3; \$4.00 per doz.
- Sardonyx.** 25 inches. An outstandingly beautiful shade of clear lilac rose. One of the tallest and finest Tulips in the Triumph listing. Highly recommended. 80c per 3; \$2.75 per doz.
- Scarlet Admiral.** 22 inches. Fine cup-shaped flowers of very brilliant scarlet, with vivid black base and anthers. Strong grower with a long blooming period. 50c per 3; \$1.75 per doz.; \$13.00 per 100.
- Shenandoah.** 20 inches. A creamy lemon-yellow, shading to golden yellow at the base; recurving petals; a flower of unusually fine form. 50c per 3; \$1.60 per doz.
- Telescopium.** 22 inches. Violet, tinted rosy red, inside wine-red; oblong flower. 40c per 3; \$1.25 per doz.; \$9.50 per 100.
- Ursa Minor.** 22 inches. Deep golden yellow; an exceptional bedding variety. The finest golden yellow in its class. 60c per 3; \$2.00 per doz.; \$15.00 per 100.
- U. S. A.** 24 inches. A very fine flower of orange-red, with a distinct orange-yellow edge. This variety has fine lasting qualities. 60c per 3; \$2.00 per doz.; \$15.00 per 100.
- Virgo.** 22 inches. Rich pansy-violet with lighter edge. The whole flower has a glossy coppery colored reflection; large strong flower. Extra. 50c per 3; \$1.75 per doz.; \$13.00 per 100.
- Wagner.** 21 inches. A beautiful shade of bright scarlet which is but seldom seen. Very strong and sturdy, a novelty of great promise. 65c per 3; \$2.10 per doz.; \$16.00 per 100.
- Zenobar.** 20 inches. A brilliant vermilion-red, a very striking color. Beautiful for beds and borders. Extra long blooming. 40c per 3; \$1.50 per doz.; \$11.00 per 100.
- Zorlinde.** 18 inches. A very sturdy, strong scarlet, with vermilion gloss. Deliciously fragrant, one of the few fragrant Tulips. 45c per 3; \$1.50 per doz.; \$11.00 per 100.



Mr. Kerbert

Pres.
von
Hindenburg



Ursa Minor

The varieties marked with an asterisk (*) may be purchased in a bulb one size smaller, at 20% discount.

LATE FLOWERING *Double Tulips*

These double varieties are extremely showy, with flowers as large as Peonies, and come in an extraordinary range of colors. They have created a remarkable interest, and in the past nearly all the available supply has been bought by our "Tulip Time" visitors, who were able to see them in bloom. As real novelties we want to recommend them for exhibition or show purposes. Of latest introduction, quantity of bulbs is limited, and early orders are more apt to insure delivery.



Allegro



Vuurbaak (See page 18)



Mr. Van der Hoef
(See page 18)

	Three	Doz.	100
ALLEGRO. 20 inches. Fuchsia-red with narrow white edge, flowers more than 6 inches across....	\$0.80	\$2.75	
ATTRACTION. 22 inches. Glowing orange-red with narrow white border; beautiful large double flower of immense size75	2.50	
BLUE FLAG. 22 inches. Lovely lavender-blue flower carried on a strong and sturdy stem. Although an old variety, it is much admired each year by our Tulip Time visitors. Flowers are of extremely large size and unusually attractive....	.75	2.50	18.00
DADONA. 20 inches. Dark wine-red, edged creamy white, feathered. This variety is very scarce and cannot be sold in large quantities75	2.50	
DELADIER. 20 inches. Deep carmine-rose, a pleasing color and a very sturdy grower75	2.50	
EPICURE. 24 inches. A lovely variety of old gold, with an orange-yellow glow. New and different60	2.20	
EROS. 20 inches. An outstandingly beautiful double Tulip of salmon-pink. Highly recommended	1.35	4.50	
FESTIVA MAXIMA. 12 inches. A short, very double pure white Tulip, absolutely outstanding for this type. It is the only short double white Tulip in this class of which we know	1.50	5.00	
HAYDON. 14 inches. A lovely clear lavender, the only one of this color in the Double Triumph75	2.50	
JANE COWL. 22 inches. A tall, real peony type Tulip, of orange-maroon, with a narrow edge of golden yellow. A very striking and strong Tulip75	2.50	
KOKOMO. 16 inches. Dark chestnut-brown, changing to red, golden yellow border; ideal for bedding75	2.50	
LA BELLE ALLIANCE. 22 inches. Blue and white feathered flowers of unusual size; identical in habit to Blue Flag75	2.50	18.00
LIVINGSTON. 18 inches. Large flower of bright rosy red; a sturdy plant75	2.50	18.00
MARIAGE DE MA FILE. 24 inches. Cherry-crimson feathered white. Flowers as large as a Peony85	3.00	22.00
MT. TACOMA. 22 inches. Extra large flower of the purest white, with emerald-green markings on outer petals. Very strong and sturdy, with long blooming season. Still very scarce	1.50	5.00	
OTTAWA. 16 inches. Pure golden yellow flower, ideal for bedding purposes. Very double75	2.50	
PAVO. 20 inches. Carmine-red; extra double, very large flower. Sturdy grower, with firm, stiff stems60	2.00	
SEEDLING No. 20. 18 inches. A beautiful shade of light blue. Large flower of great substance70	2.35	
TRIXIE. 22 inches. Fine amaranth-red with small white border. Large flower of great substance70	2.35	
UNCLE TOM. 22 inches. An especially extra double, producing a fine-shaped flower. The color is a warm, dark red. This is a variety we can recommend	1.50	5.00	



Livingston

Novelty Parrot Tulips



Here is a complete list of the most outstanding novelties in Parrot Tulips. These new Parrots, in contrast to the older varieties, all have heavy firm stems to keep the flowers erect, and are a valuable addition to any garden. These new types, strange to say, have all sported from the more popular varieties long known to the flower lover. Most everyone has admired Parrot Tulip Fantasy, which variety is by far the best known of this new type, and which has sported from the well-known Darwin Tulip, Clara Butt. They are so entirely different from all the other flowers that they provoke the startled admiration of all who see them.

	Each	Three	Doz.
BLUE PARROT. 26 inches. A glorious flower of bright violet, shading to steel-blue. As blossom opens it gradually changes to a most pleasing blue; very large flower with strong stem. Sport and color of Darwin Tulip Bleu Aimable. Highly recommended	\$1.50	\$4.25	
DISCOVERY. 26 inches. A beautiful rose Parrot; large flower of outstanding quality, of very sturdy and strong habit. Sport and color of the well known Darwin Tulip, Princess Elizabeth	1.15	3.00	
ELEANORA. 18 inches. A crimson-purple shaded violet; extremely large flower with heavy petals and a strong and stiff stem of medium height. Very fine. Sport and color of Single Early Tulip, Eleanora80	2.25	
FANTASY. 20 inches. Beautiful salmon-pink with a much darker interior, outside marked with emerald-green. The variety has made a remarkable hit. Sport and color of Darwin Tulip, Clara Butt	\$11.00 per 100..		.50 1.65
GADELAN. 22 inches. Violet and mauve with purple shadings, center white; a beautiful variety of gigantic size and excellent substance. Sport and color of Darwin Tulip, Sensation. Highly recommended	2.75	7.50	
LADY DERBY. 28 inches. Lilac with lighter edge, center white, edged blue; a very sturdy and extra large flower. Sport and color of Darwin Tulip, Circe35	1.00	3.00
OPAL QUEEN. 26 inches. A very beautiful pearl-blue Parrot of remarkable size carried on a strong stem. Sport and color of Darwin Tulip, Glory of Walworth. Highly recommended.	1.75	5.00	16.00
RED CHAMPION. 24 inches. Huge flower of bright crimson with slight shading of rosy red; flowers are carried on strong and stiff stem; still very scarce but will undoubtedly become the most beautiful of all the Parrot Tulips. Sport and color of Darwin Tulip Bartigon	2.25	6.50	
SUNSHINE. 22 inches. Lovely new Parrot of pure golden yellow, of true Parrot type. One of the latest novelties, was priced until recently at \$75.00 each	3.00	8.50	
THERESE. 29 inches. Brilliant scarlet, inside glittering scarlet of a lighter shade; white center bordered blue; produces a tremendously large flower. In our estimation the most outstanding of the new Parrot Tulips in the red shade. Sport and color of Darwin Tulip, Farncombe Sanders. Highly recommended	1.25	3.50	12.00

Special Introductory Collection of the New Parrot Tulips

Lady Derby Opal Queen Therese

1 Each of 3 Novelty Parrots \$3.25
3 Each of 3 Novelty Parrots 9.00



Lady Derby



Opal Queen



Therese

BOTANICAL TULIPS

These wild Tulips come in lovely odd shapes, many with reflexed petals and curiously twisted and reflexed foliage. They belong in the rock garden where they thrive and increase if left in the ground from year to year. Plant them in groups of six to twelve bulbs among the rocks in fairly well-drained pockets. We have eliminated all varieties of inferior and poor blooming qualities and only those varieties that have given satisfaction under American conditions have been listed.

Chrysantha. 8 inches. One of the smallest species in existence; a real novelty. Color rich yellow with rose exterior. 45c per 3; \$1.50 per doz.; \$10.75 per 100.

Cornuta Stenopetala. 15 inches. Graciously formed flowers of scarlet and gold. Long narrow and twisted petals, giving an unusual effect. Held upright on a tall, stiff stem; a most interesting species, having a very long blooming season. \$1.00 per 3; \$3.50 per doz.

Eichleri. 10 inches. Crimson-scarlet shaded orange, with glittering black center marked with gold. Very large flower. This variety will outshine a great many of our cultivated Tulips. Native of Turkestan. Highly recommended. 50c per 3; \$1.75 per doz.; \$13.00 per 100.

Florentina Odorata. 15 inches. Deep golden yellow inside; outside yellow to buff. Long pointed petals of unusual shape. 35c per 3; \$1.20 per doz.; \$8.50 per 100.

Marjoletti. 14 inches. Soft primrose with a carmine-red border; the flower held on strong, straight stem. Native of Savoy. Blooms second week in May. 45c per 3; \$1.50 per doz.; \$11.00 per 100.

Madame Lefebvre. 15 inches. A most intense orange-red. This variety is considered to produce the largest flowers of any variety, for the petals measure $2\frac{3}{4}$ by $5\frac{1}{2}$ inches, and when normally opened is 8 inches across. A most valuable addition. On account of its tremendous size, plant in shaded and protected spot. \$1.50 per 3; \$5.00 per doz.

Primulina. 9 inches. White with pink border, and recurved petals, resembling a dainty Water Lily. A scarce and unusual variety. Flowers open only on cloudy days and in the evening, and do not open in full sun like other varieties. \$2.25 per 3; \$7.50 per doz.

Sprengeri. 12 inches. Yellow with narrow red border. Late bloomer which blooms after the Darwin Tulips. 20c per 3; \$1.35 per doz.; \$10.00 per 100.

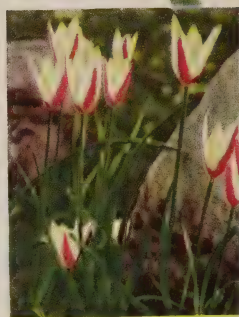
Tubergeniana. 16 inches. Award of Merit, R. H. S. Brilliant salmon-orange of tremendous size. This variety is outstandingly beautiful, but extremely scarce. Each, \$5.00.



Eichleri



Marjoletti



Chrysantha



General De Wet

Double Early Tulips

(For April flowers in your garden.)

Murillo. 12 inches. Delicate light rosy pink, flushed white; delectable color, extra fine variety. 50c per 3; \$1.75 per doz.; \$12.00 per 100.

Peach Blossom. 12 inches. Brilliant dark rose-pink; large flower, and splendid for forcing. 50c per 3; \$1.75 per doz.; \$12.00 per 100.

Mr. Van der Hoef. 12 inches. A pure golden yellow sport of Murillo; equally fine for bedding and forcing purposes. 50c per 3; \$1.75 per doz.; \$12.00 per 100.

Vuurbaak. 12 inches. Fiery scarlet tinged orange; when open produces a very large flower. Very showy for bedding. 50c per 3; \$1.75 per doz.; \$12.00 per 100.

DOUBLE EARLY TULIP COLLECTION

6 each of above 4 varieties	\$ 3.40
12 each of above 4 varieties	6.70
25 each of above 4 varieties	11.75

Single Early Tulips

(For April flowers in your garden.)

General de Wet. 16 inches. Huge, sweet-scented flowers of bright fiery orange, flushed scarlet. Exceptionally fine for bedding. 45c per 3; \$1.50 per doz.; \$10.50 per 100.

Keizerskroon. 16 inches. A lovely variety of bright red, with a broad yellow border, very effective. A grand old favorite. 50c per 3; \$1.75 per doz.; \$13.00 per 100.



THE TULIP

Special offering of "The Tulip", a booklet describing the history and culture of the Tulip in the United States, by Harry Nelis. A very comprehensive and useful booklet for anyone interested in Tulip culture, contains full cultural instructions, especially prepared for those who wish to fully understand Tulip requirements. Regular price, 25c. **SPECIAL NOW FOR ONLY 10c.**

PLANTING TABLE

Number of Bulbs Required to Plant Circular Beds

Diameter of Bed	4" Apart	6" Apart	8" Apart
3 feet	90	36	
4 feet	120	48	37
5 feet	220	84	69
6 feet	260	120	78
7 feet	400	160	96
8 feet	460	210	127
9 feet	630	260	156
10 feet	710	325	190
11 feet	900	390	240
12 feet	1000	460	270

For an oval bed, add length and breadth and divide by 2. For example, a 10x6 ft. oval bed requires as many plants as a round bed 8 feet in diameter.

Hyacinths

Hyacinths are still extremely scarce, and will undoubtedly remain so until after the war. We have been able to procure a limited supply, and are offering here a selection more nearly complete than we have had for some time.

Red Pink Rose	Yellow Purple Maue	Light Blue Dark Blue White
---------------------	--------------------------	----------------------------------

Price, Large Size Bulbs 35c Each; \$3.85 per Doz.

HYACINTH COLLECTION

1 each	of 5 colors (5 bulbs)	\$1.75
3 each	of 5 colors (15 bulbs)	5.00
5 each	of 5 colors (25 bulbs)	8.40
10 each	of 5 colors (50 bulbs)	16.50

Nelis Famous DUTCH RAINBOW Collection

This is the finest, most colorful mixture of Darwin, Breeder, Cottage and Lily-Flowered Tulips, in a color range that includes every color, shade and blending. Ideal for beds and cutting.

TOP GRADE RAINBOW MIXTURE

50 bulbs ..	\$ 3.60
100 bulbs ..	6.90
250 bulbs ..	16.00
1000 bulbs ..	60.00

BEDDING SIZE RAINBOW MIXTURE

Blooming Size	
50 bulbs ..	\$ 2.70
100 bulbs ..	5.00
250 bulbs ..	12.00
1000 bulbs ..	46.00



Narcissus



Dick
Wellband

The term *Leedsii* means that the perianth is white, the cup is short, either white, citron, or sometimes pink or apricot.

The term *Barri* means that the cup or crown measures less than one-third the length of the perianth segments.

The term *Jonquil* means that the foliage is very long and narrow, or round; in other words, rushlike. The flowers buttercup-yellow, small, but very fragrant.

The term *Poetaz* means the bunch-flowering type, producing from six to twelve flowers per stem, and in all cases deliciously fragrant.

Albatross. (*Barri*.) White perianth, pale citron-yellow cup, edged orange-red. Received a First Class Certificate, but is now an old variety. 35c per 3; \$1.15 per doz.; \$8.00 per 100.

Archeron. (*Barri*.) Outer petals open cream color, which turn almost pure white as the flower ages. The cup is of a deep orange color, a very strong and long lasting variety for outdoor planting. Received an Award of Merit. 40c per 3; \$1.40 per doz.; \$10.00 per 100.

Beats All. (*Incomparabilis*.) A novelty of recent introduction, perianth of light sulphur-yellow, with a flaring cup of chrome-orange, and rim of deeper orange at brim. An outstanding late and free-flowering variety of robust growth. 65c per 3; \$2.00 per doz.; \$14.00 per 100.



Archeron



Glorious

Novelty Narcissus Collection

Well balanced to include some of the finer types of the different classes.

Carlton	Mary Copeland
Glorious	Mayflower
Imperator	Orange Blossom
Lord Wellington	Red Cross
Luna	Thalia

3	each of these 10 varieties (30 bulbs)	\$12.50
6	each of these 10 varieties (60 bulbs)	22.50
12	each of these 10 varieties (120 bulbs)	40.00

or Daffodils

Beersheba. Perianth and trumpet of magnificent proportions. Sturdy foliage and stem, height 20 to 22 inches. Its color is pure white, and expressive of purity in the highest sense. Those who are forming collections of fine Narcissus rate Beersheba at the top of the large white Trumpets. Received an Award of Merit, and a First Class Certificate. **Each, \$2.00.**

Bonfire. (Barri.) A remarkable flower, entirely distinct, of perfect design and habit. Pure primrose perianth, with a cup of deep fiery orange, edged deep blood-red. Outstandingly beautiful among lower priced varieties. **60c per 3; \$1.90 per doz.; \$14.00 per 100.**

Campernelle, Double. (Jonquil.) Ideal for cutting, for this variety has strong stems that bear from two to three small, fragrant flowers of golden yellow. About 13 inches tall. **40c per 3; \$1.35 per doz.; \$9.00 per 100.**

Campernelle, Single. (Jonquil.) A tiny, fragrant Daffodil of golden yellow, with tips of pointed, grasslike foliage reaching above the flower. A delightful blossom with overlapping broad petals making a nicely rounded perianth; frequently blooms three to a stalk. **35c per 3; \$1.05 per doz.; \$7.00 per 100.**

Carlton. (Incomparabilis.) A beautiful variety that is destined to become very popular when more widely known. Broad, overlapping flat perianth, with a large expanded cup frilled at brim, the entire flower of a uniformly soft yellow. A magnificent plant of great vigor, very free-flowering, early, of long-lasting quality, excellent for exhibition. This variety received an Award of Merit. **\$2.00 per 3; \$6.75 per doz.; \$50.00 per 100.**

Cassandra. (Poeticus.) Perianth white, cup canary-yellow, rimmed bright red; one of the newer Poeticus varieties. Award of Merit. **35c per 3; \$1.15 per doz.; \$8.00 per 100.**

Cheerfulness. (Double Poetaz.) A double form of the famous cluster-flowering Daffodil. Received an Award of Merit; splendid for the garden, late blooming, very fragrant. Frequently called the "Gardenia Daffodil." **40c per 3; \$1.35 per doz.; \$10.00 per 100.**



Beersheba



King Alfred



Cheerfulness

Narcissus or Daffodils—Continued



Mrs. R. O. Backhouse

Exhibition Collection of NARCISSUS

Archeron
Beats All
Cheerfulness

Croesus
Double Campenelle
Francisca Drake
Inglescombe

Lucinius
Orange Cup
Robt. Sydenham

3 Each	of 10 varieties (30 bulbs)	\$ 4.60
6 Each	of 10 varieties (60 bulbs)	8.50
12 Each	of 10 varieties (120 bulbs)	16.00
25 Each	of 10 varieties (250 bulbs)	30.00

CROESUS. (Incomparabilis.) Perianth light canary-yellow, opening flat, with broad, fluted cup of rich orange to base; free flowering and desirable in every way. Received a First Class Certificate as well as an Award of Merit. **40c per 3; \$1.35 per doz.; \$9.50 per 100.**

CROWNED BEAUTY. (Barri.) A novelty Narcissus, with a golden yellow perianth, the long petals producing a starlike effect. The deeply frilled cup of dark orange blends to a golden yellow at the throat. A large, open and airy flower. **\$1.80 per 3; \$6.00 per doz.**

DIANA KASNER. (Barri.) This variety is considered one of the most valuable of recent introductions, and cannot be recommended too highly. Pure white perianth, with a large fluted yellow cup, frilled blood-red, very free-flowering and an excellent forcer. **40c per 3; \$1.40 per doz.; \$10.00 per 100.**

DICK WELLBAND. An exhibition variety of great excellence, this variety stands out even in the largest collection of Daffodils. The perianth is pure white, and the cup a brilliant flame-orange, and the startling contrast between petals and cup makes this variety a great beauty. The color does not fade, but rather intensifies with age, and the flower has unusual lasting qualities. Highly recommended. **\$2.25 per 3; \$9.00 per doz.**

EMPEROR. (Yellow Trumpet.) Perianth deep primrose-yellow, with rich yellow trumpet. Large flowers of remarkable substance. **40c per 3; \$1.35 per doz.; \$9.50 per 100.**

FIRETAIL. (Barri.) A new variety of importance, broad-petaled, creamy white perianth, and large orange cup with scarlet-orange frill. Received an Award of Merit, and First Class Certificate. **75c per 3; \$2.50 per doz.; \$19.00 per 100.**

FRANCISCA DRAKE. (Incomparabilis.) We cannot adequately describe the beauty of this distinctly new type. The pure white perianth petals are of unusual substance, an inch and a half wide, and tinted gold at the base, which shows through on the outside; the cup, wide and deep, is golden yellow at the base, changing gradually to flame-orange at the densely frilled edge; the flowers are held well above the fine foliage, giving the effect of white seagulls taking flight. Strong-growing and very free-flowering; received an Award of Merit. **75c per 3; \$2.50 per doz.; \$18.50 per 100.**

GLORIOUS. (Poetaz.) Tall flower, delightfully informal habit, creamy white, round perianth with brilliant orange-scarlet cup. Fine for semi-shade. Received an Award of Merit and First Class Certificate. **90c per 3; \$3.00 per doz.; \$22.00 per 100.**

GOLDEN SCEPTER. (Jonquil Hybrid.) More gracefully proportioned than the Giant Trumpets, a medium sized perfectly built flower of deep jonquil-yellow, three or more inches in diameter, star-shaped perianth, slightly lighter than the trumpet, which is slightly rolled and flared at the edge; long-lasting qualities. Received an Award of Merit, and First Class Certificate. **40c per 3; \$1.35 per doz.; \$10.00 per 100.**

GOLDEN SUNRISE. (Trumpet.) A perfect flower of giant proportions. Golden yellow perianth and flaring trumpet. Surely one of the most outstanding new Giant Trumpet varieties; early bloomer. **\$2.10 per 3; \$7.00 per doz.**

HELIANTHUS. (Barri.) Soft yellow perianth with a short, wide open cup, and a distinct edge of clear orange-red, extending golden yellow to the throat. The flower is medium in size, but very striking in its unusually fine and brilliant appearance. A real novelty. **\$1.20 per 3; \$3.60 per doz.**

HER GRACE. (Leeds.) Unusually lovely variety with a silvery white perianth, cup of delicate sulphur-yellow, passing off white, which is deeply frilled at mouth. **\$2.25 per 3; \$7.50 per doz.**

IMPERATOR. (Trumpet.) This lovely, graceful Daffodil is considered one of the finest varieties. Perianth and cup purest white. **\$1.10 per 3; \$3.75 per doz.; \$27.50 per 100.**



John Evelyn



Sparkling Eye

Narcissus or Daffodils—Continued

INGLEScombe. (Double.) By far the only outstanding Daffodil in its class. Its color is of the purest yellow, without blemishes of any kind, unlike the older types which were marred with green in the petals. It keeps its pure color to the very last. Of the doubles, we feel we are offering you the best there is to be had. Received two Awards of Merit. 60c per 3; \$2.00 per doz.; \$15.00 per 100.

IRENE BORDONI. (Barri.) Outstanding among the new red-cupped Daffodils. Perianth of pure white, with beautiful overlapping petals of perfect form, tinted gold at the base. The cup is of brilliant flame-orange, which intensifies with age. Each, \$1.25; \$3.50 per 3.

JOHN EVELYN. (Incomparabilis.) Deservedly an international favorite, and an outstanding variety among this class. Opening flat, the pure white perianth measuring four to five inches in diameter, with the cup densely frilled and fluted or shirred to the base; good neck, strong grower, and free-flowering. Received an Award of Merit. 70c per 3; \$2.25 per doz.; \$16.50 per 100.

KING ALFRED. (Yellow Trumpet.) Received a First Class Certificate. An old variety, but still very good. The finest giant all golden yellow Narcissus. Jumbo size bulbs, 60c per 3; \$2.00 per doz.; \$15.00 per 100. First size bulbs, 45c per 3; \$1.50 per doz.; \$11.00 per 100.

LADY DIANA MANNERS. (Barri.) Outstanding among new red Daffodils, with a large creamy white perianth and orange-red cup. Received an Award of Merit. 75c per 3; \$2.50 per doz.; \$18.00 per 100.

LAURENS KOSTER. (Poetaz.) White perianth with delicate lemon-colored cup. A splendid variety; good for forcing. 40c per 3; \$1.35 per doz.; \$9.50 per 100.

LORD WELLINGTON. (Yellow Trumpet.) This glorious Daffodil is the best of the all-yellow trumpets ever offered. The enormous flower of rich golden yellow has massive, broad petals, and an immense trumpet, and is carried on a strong stem. This exquisite novelty should be included in every collection. \$1.80 per 3; \$6.00 per doz.

LOVENEST. (Trumpet.) One of the very few members of the "Pink Daffodil" class; among the daintiest of all the trumpets; medium in height with a star-shaped perianth of informal type; nicely proportioned trumpet of saffron-yellow, turning to apricot-pink; delightfully charming at all stages; very early. Received an Award of Merit. \$1.10 per 3; \$3.75 per doz.

LUCINIUS. (Incomparabilis.) An outstanding flower of unusually good form and excellent substance, of purest self-colored golden yellow. Received an Award of Merit. We recommend this variety very highly. 45c per 3; \$1.50 per doz.; \$11.00 per 100.

LUNA. (Jonquil.) One of the very best of this type, producing two or three large, very beautiful lemon-yellow flowers on each stem. Very fragrant; late blooming. 50c per 3; \$1.75 per doz.; \$12.00 per 100.

MARY COPELAND. (Double.) A beautiful novelty of the new semi-double type, and termed the most striking new double. The longer petals are pure creamy white with a golden ray down the center, interspersed with shorter petals of lemon and brilliant orange, giving a three-color effect. Received a First Class Certificate and an Award of Merit. \$2.00 per 3; \$6.50 per doz.; \$45.00 per 100.



Imperator



Golden Scepter



Thalia



Inglescombe

Narcissus or Daffodils—Continued

ROBT. SYDENHAM. (Trumpet Daffodil.) A superb heavily frilled trumpet of beautiful golden yellow, backed by a symmetrical soft sulphur-yellow perianth. The whole flower shows strength, and is beautifully proportioned. Highly desirable for exhibition and garden purposes. 75c per 3; \$2.50 per doz.

SATURNUS. (Barri.) Large, pure white perianth, and an unusually beautiful, deeply frilled, deep orange cup, producing a glorious and striking effect against the white background. Strong flower and unquestionably one of the finest we offer in the latest varieties. Received the Award of Merit as well as First Class Certificate. \$1.50 per 3; \$5.30 per doz.

SIRENE. (Barri.) A lovely novelty with a large, well-shaped perianth of cream-yellow with an enormously large, flat crown of brilliant orange, shading to orange-yellow at the center. A strong grower, free blooming. \$1.55 per 3; \$5.50 per doz.

SPARKLING EYE. (Poetaz.) To us the most outstanding variety of the bunch-flowering type, which is in great demand among growers. White outer petals, cup glittering scarlet; free blooming and fragrant. Blooming with the Darwin Tulips, it prolongs the blooming season of Narcissus. Recently received an Award of Merit. \$1.45 per 3; \$5.00 per doz.

THALIA. In addition to a peculiar attraction at first sight, this flower leaves one with an impression that it is white, yet it is a whiteness that is not white. The recurring petals and the angle of the three trumpets are unlike the conventional short-cupped Daffodil. The stem is dark green, round and reedlike

thin. Called "Orchid-Flower" Narcissus. 80c per 3; \$2.65 per doz.; \$19.25 per 100.

THE GOVERNOR. (Barri.) Beautiful overlapping petals of perfect symmetrical proportions, but seldom seen in Daffodils. The color is white, changing to ivory in center, and the fringed cup of bright red makes a beautiful contrast against its pure white background. An outstanding novelty, which we received direct from the originator, and are the first to offer to the public. \$1.65 per 3; \$5.75 per doz.

THE PRINCE BARRY. (Poeticus.) A new novelty of the outstanding new Poeticus type. Perianth of purest white, wide overlapping petals of fine symmetrical form. The large, flat cup of golden yellow is bordered with a distinct dark red, and has a green center. \$1.40 per 3; \$4.75 per doz.

TREDORE. (Barri.) One of the most striking of the new novelties. Perianth of soft moonlight-yellow and strikingly symmetrical open cup of fiery red, with a soft salmon flush extending to the throat. Received an Award of Merit. \$2.10 per 3; \$6.25 per doz.

TWINK. A double of the semi-full type, with alternating petals of soft primrose and clear orange, and so arranged as to give the flower a most attractive appearance. Very free flowering and hardy. 65c per 3; \$2.10 per doz.; \$15.50 per 100.

VAN WAVEREN'S GIANT. An enormous flower with deep yellow trumpet, perianth of pale yellow with outer petals exceptionally broad, and inner ones usually slightly twisted, making it very graceful. Received a First Class Certificate. 70c per 3; \$2.25 per doz.; \$16.00 per 100.

XENOPHON. (Poetaz.) This variety produces large flowers of deep yellow, with large orange cup, free flowering and delightfully fragrant. Received an Award of Merit as a variety for cutting. 60c per 3; \$2.00 per doz.; \$15.00 per 100.

YELLOW POPPY. (Incomparabilis.) A fine new introduction, with a well-proportioned perianth of good size, and flaring trumpet. Perianth of deep yellow, and cup of the same lovely shade. Beautiful, and recommended for garden or for cutting. 40c per 3; \$1.35 per doz.; \$9.00 per 100.



Lord Wellington

MAYFLOWER. (Poeticus.) The finest of the class we have yet seen.

A new novelty with a pure white perianth of exquisite form, the short cup edged fiery red, changing to orange at center. Received an Award of Merit as a show flower. \$1.60 per 3; \$5.75 per doz.

MEDUSA. (Poetaz.) Perianth pure white with an orange-red cup. This variety received an Award of Merit, also a First Class Certificate for a market variety for cutting from outside, as well as a variety for garden decoration. 45c per 3; \$1.40 per doz.; \$10.50 per 100.

MRS. R. O. BACKHOUSE. (Leeds.) This is the famous "Pink Daffodil." Fine informal perianth of ivory-white, and beautifully proportioned, slim, long trumpet of apricot-pink, changing to shell-pink at the deeply fringed edge; delicately beautiful but of exceptional substance; long lasting, early; belongs in every collection. Each, \$1.60; \$4.50 per 3.

MRS. E. H. KRELAGE. (Trumpet.) The best known of the now popular White Daffodils, of very sturdy growth, smooth waxy texture and good form. Trumpet slightly tinted palest yellow when first open, changing to a uniform ivory-white. Received an Award of Merit. 90c per 3; \$3.00 per doz.; \$22.00 per 100.

OLYMPIA. (Yellow Trumpet.) Perianth light chrome-yellow, trumpet deep chrome-yellow, of huge dimensions. Free flowering and hardy. Received Award of Merit. 45c per 3; \$1.55 per doz.; \$11.50 per 100.

ORANGE BLOSSOM. (Incomparabilis.) A beautiful novelty, worthy of its name. Fine proportioned sulphur-yellow perianth which is slightly tilted backwards, showing to greater advantage the graciously shaped deep orange trumpet. \$1.65 per 3; \$5.50 per doz.

ORANGE CUP. (Poetaz.) Perianth clear yellow with bright orange cup, considered one of the finest of the Poetaz group. Fine for semi-shade. 45c per 3; \$1.55 per doz.; \$11.50 per 100.

PHEASANT'S EYE. (Poeticus.) Snow-white perianth; cup margined with bright crimson. Very fragrant; late blooming. 30c per 3; \$1.05 per doz.; \$7.50 per 100.

PYGMALION. (Incomparabilis.) Perianth sulphur-yellow, changing to ivory, showing deeper highlights. Large, frilled deep yellow trumpet, with a distinct orange edge. Received an Award of Merit. \$1.35 per 3; \$4.50 per doz.

QUEEN OF THE NORTH. (Leeds.) Cup of glistening white, perianth soft primrose-yellow, with sulphur-white edge. Received an Award of Merit. Fine for naturalizing. 40c per 3; \$1.25 per doz.; \$9.00 per 100.

RED BEACON. (Barri.) This lovely variety has a perianth of ivory-white, with a very striking, spreading cup of brilliant orange. 50c per 3; \$1.65 per doz.; \$12.00 per 100.

RED CROSS. (Incomparabilis.) A famous new variety, extra large, and producing a strong grower; producing a flat primrose-yellow perianth and a deep yellow cup, densely frilled deep orange, substantial and long lasting. Fine both in the garden and for exhibition. 80c per 3; \$2.65 per doz.; \$19.00 per 100.

RED GUARD. (Poetaz.) Another winner of an Award of Merit, with perianth of deepest golden yellow overlaid with salmon, and a cup of fiery red, making a beautiful and unusual color combination. \$1.60 per 3; \$5.75 per doz.

PAPER-WHITE NARCISSESS

Suitable for indoor growing in pots, gravel, sand or fiber. Can be had in bloom from Christmas until Easter. Plant different lots every two weeks from October 1st until March 1st. Will give you an abundance of beautiful flowers during the winter. Not suitable for outdoor planting except south of the Carolinas. We offer only Jumbo or Exhibition size bulbs.

75c per Doz.
\$5.50 per 100



SEEDLING NARCISSUS

We were fortunate in buying from one of the best hybridizers in the world a limited number of extraordinary seedlings, as ill health forced the originator to discontinue his labors.

Each individual bulb is of high enough standard to produce a variety of its own, and bear its own name. Each plant is different from the others, practically all having red-orange or scarlet centers, and are the finest seedlings we have ever seen, and therefore we cannot recommend them too highly. Here is your chance to enjoy something really so new and surprisingly beautiful for so little; besides, Narcissi make a permanent planting for you to enjoy for many years.

6 for	\$ 1.15
12 for	2.00
25 for	4.00
100 for	15.00

BOTANICAL DAFFODILS

We recommend these Narcissi for rock gardens or some particularly shaded place in your garden. Cover the first year with three or four inches of mulch, peat moss or other fine material. When established they may remain undisturbed for years. Botanical Daffodils cannot stand any manure.

Bulbocodium Conspicuum (Yellow Hoop-Petticoat). Flowers rich golden yellow, of hoop-petticoat form, and rushlike foliage. \$1.25 per doz.; \$9.00 per 100.

Triandrus Calathinus. One of the most beautiful little Daffodils in existence. Flowers produced in drooping clusters of two or three, snowy white, fluted crowns. \$1.10 per doz.; \$8.00 per 100.

W. P. Milner. Dainty sulphury white. Very scarce. A charming free flowering variety, highly recommended for rock gardens and naturalizing. 3 for 75c; \$2.00 per doz.

6 each of above novelties (18 bulbs)	\$2.15
12 each of above novelties (36 bulbs)	4.15



Daffodils FOR NATURALIZING

**Suitable for Garden
Display, Woodland
Planting, or Cutting**

Practically any soil has been found suitable, and they are grown equally well in the open as among trees and in woodland. Contains a mixture of Large Trumpets, Leeds, Barri and Poeticus types, making a mixture that cannot be beaten for value, and worth much more than we charge for them. Plant at least 8 inches deep, but avoid places where water may collect at any time, as they like drainage. Try to plant before October 15th, or shortly thereafter, but place your order early, as the demand is increasing for these bulbs at this special low price we have adopted, and we cannot take orders for less than 50 bulbs.

50 for	\$ 2.50
100 for	4.50
250 for	10.75
1000 for	40.00

MINIATURE FLOWERING BULBS

To brighten up the border, for naturalizing in woodland, or for filling in the bare spots in the rock garden, these Miniature Flowering Bulbs are perfect, requiring little care, and establishing themselves without effort.

FALL BLOOMING CROCUS

These Crocus are different from the spring-blooming Dutch Crocus, and bloom during the month of October, while their foliage and seed pods as well, are produced the following spring. They are perfectly hardy, and establish and multiply easily. Order early. They should be planted in September. Try this Crocus for something unusual, and entirely different.

Zonatus. Rose-lilac and a very free bloomer. A very satisfactory variety, which may be used for indoor blooming. They will bloom dry, without soil or water, and after they are through blooming they may be planted in the garden where they will establish themselves without effort. 80c per doz.; \$6.00 per 100.

MUSCARI (Grape Hyacinth)

The foliage of this plant is similar to that of Scilla, but the flowers are of entirely different form—grapelike clusters closely set, and wonderful for use as a cut flower, splendid for naturalizing. Height 15 inches.

ALBA. White. 75c per doz.; \$5.50 per 100.
HEAVENLY BLUE. 60c per doz.; \$4.50 per 100.

SCILLA CAMPANULATA

All varieties of Scilla Campanulata are splendid for naturalizing, because they will flower in shady places. All have bells like small Hyacinths, forming long and graceful spikes. Height 15 inches.

CAMPANULATA ALBA. White. 90c per doz.; \$6.50 per 100.
CAMPANULATA, Blue Queen. Large bright blue. 90c per doz.; \$6.50 per 100.
CAMPANULATA, Rose Queen. Soft lilac-rose. 90c per doz.; \$6.50 per 100.

PLUME HYACINTH (Muscari Plumosum)

A very unusual and fascinating flower, bearing feathery plumelike flowers of rosy violet color. Blossoms in May. 85c per doz.; 100, \$6.25.



Muscari Plumosum



Crocus Zonatus



Muscari, Heavenly Blue



Scilla Campanulata

SENSATIONAL NEW WONDER BULB

GORGEOUS

Colchicums

**The Only Bulb That
Will Bloom Indoors
Without Soil!
Without Water!
Without Care!**

Place it, just as it is, on the mantel, window ledge, or table, and with absolutely no further attention on your part, it will reward you with exquisitely lovely bloom. Use them for gifts. They attract immediate attention, and the usefulness of the bulb does not end when the blossoms fade. Plant them outdoors, and in the spring will appear the luxuriant green foliage. Dig up the bulbs after the foliage has died down, take them indoors to repeat this marvelous feat of Nature!

Order Early! Colchicum Bulbs Bloom in August and September!

We are offering here a complete listing of the newest varieties of this interesting novelty:

	Each	Per 3	Doz.
AUTUMNALE ALBUM. Pure white Colchicum	\$0.25	\$0.70	\$2.50

NEW GIANT-FLOWERING COLCHICUMS

AUTUMN QUEEN. Dark lilac, prolific and early. After years of careful observance we find this variety is outstanding, and highly recommended by us as among the best of the new varieties

.....	.55	1.45	5.50
-------	-----	------	------

DEANDELS. Outstanding light purple flowers of large size

.....	.50	1.35	5.00
-------	-----	------	------

LILAC WONDER. Extra large flowers of clearest mauve. The largest number of flowers of any of this new type. This is another variety we find outstanding, and can highly recommend as one of the best

.....	.60	1.65	6.00
-------	-----	------	------

PREMIER. Large, soft violet, early, very free bloomer

.....	.50	1.35	5.00
-------	-----	------	------

VIOLET QUEEN. Large lilac-violet, extra. We find that this is also a particularly outstanding variety, and one which we highly recommend

.....	.60	1.65	6.00
-------	-----	------	------

MIXED COLORS. Lovely mixture of all shades

.....	1.25	4.75	
-------	------	------	--

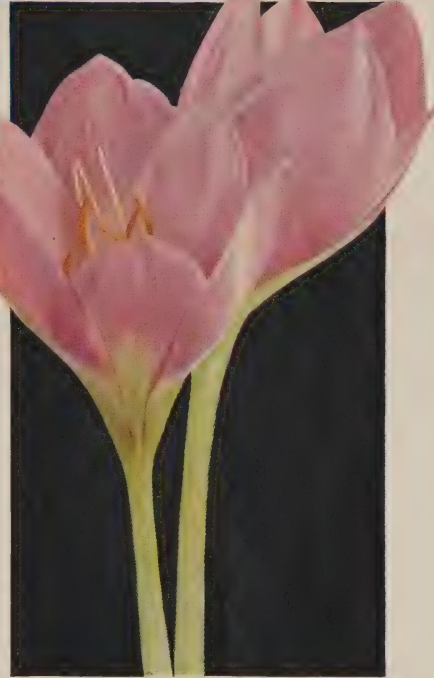
NEW AND SCARCE DOUBLE COLCHICUMS

AUTUMNALE ALBUM FL.-PL. Double pure white, unusually lovely, very scarce

.....	1.50	4.25	
-------	------	------	--

WATER LILY. Large, double, lilac flowers; long lasting. Very scarce. Medium late

.....	2.50	7.00	
-------	------	------	--



Deandels



Violet Queen



1/3
Natural
Size

Autumn
Queen

*Order
Early!*

**COLCHICUMS
Bloom in August
and September**

Collection of Named Colchicums

- 1 each of 6 single varieties (6 bulbs) \$3.00
- 2 each of 6 single varieties (12 bulbs) 5.75
- 3 each of 6 single varieties (18 bulbs) 8.00



Autumn Flowering BLACK MAGIC

Autumn Flowering IRIS

Flowering Two or More Times Each Season

We take great pleasure in offering a list of the finest fall bloomers in cultivation. While best results are secured with these Irises below the Mason-Dixon Line, with a little care we have obtained excellent fall bloom in Michigan. Some of the varieties listed not only bloom profusely early in spring, but under favorable conditions also produce crop after crop of flowers for more than 100 days in late summer and fall. There are as yet but comparatively few of these flowers in existence, and the demand has been so great that we, as well as the few other growers who have stocks of fall bloomers, could fill only a small portion of the orders received last year. Please order early. Shipment will be made starting July 15th.

	Each	Doz.
AUTUMN KING. 32 inches. A vigorous blue-purple bicolor, really exquisite. Should be in every Iris collection	\$.25	\$2.50
BLACK MAGIC. 26 inches. This rich purple variety, which turns to wine-red when struck by the rays of the setting sun, has enough intrinsic merit to recommend it highly, even if it bloomed only in the spring, and did not produce another prodigious crop of flowers in the fall	.30	3.00
DORCUS HUTCHESON. 22 inches. A fragrant, beautiful pansy-violet variety; unusually lovely	.25	2.50
SEPTEMBER SKIES. 16 inches. A purple-red self which blooms not only in the spring and fall, but in the South blooms in the summer also. A rapid multiplier	.25	2.50
SILENCE. A lovely golden yellow, overlaid with salmon. Falls golden yellow, veined salmon to orange at throat	.30	3.00

Collection of Autumn Flowering Iris

1 each	of 5 varieties unlabeled	\$ 1.25
3 each	of 5 varieties labeled	3.60
12 each	of 5 varieties labeled	12.50

Dutch IRIS

A new and early flowering race coming into bloom just after the Tulips are gone. The flowers are large, resembling the orchids, and are distinctive and brilliant in color. Flowers are of heavy texture and when cut have wonderful keeping qualities. Bulbs should be planted in the fall, 5 inches deep, on well drained soil, with slight protection after freezing weather sets in. Offered at new low prices.

	Doz.	100
Imperator. 28 inches. Rich dark blue with a distinct yellow blotch; very large	\$.80	\$6.00
Yellow Queen. 28 inches. Lovely pure deep yellow	.80	6.00
White Excelsior. 22 inches. Uniform pure white falls, very broad, of good form and substance	.95	7.25
Mixed Dutch Iris. All colors mixed	.85	6.00



Dutch Iris

English Iris



English IRIS

This magnificent mixture of bulbous English Iris has been developed at our own nurseries, and contains all the choicest varieties which can possibly be had in these fine Iris. The English Iris are a bulbous Iris which bloom in our latitude about the early part of July, and come after all other bulbous Iris. They should be planted as soon after the beginning of September as possible for best results. They prefer the more moist and heavier soils, and should have good drainage. The blooms of the English Iris are considered to be the finest of any in the Iris class, and each individual bloom is strikingly beautiful, and as cut flowers they are unsurpassed. We are offering them here in a fine mixture of colors. \$1.15 per doz.; \$8.00 per 100.



New!
DWARF IRIS

These beautiful little Iris do not grow over four inches high, and bloom in April and May. They are fine for bordering flower beds, or planting in the rock garden. Many will bloom again in the fall. Order early! We start shipping in late summer.

MIXED DWARF IRIS. A fine mixture, containing a wide range of colors, such as orange, blue, cream, purple, yellow, bi-colors, etc. 3 for 75c; doz., \$2.60.



Iris Reticulata

IRIS RETICULATA

This lovely species is one of the treasures of the garden, or rock garden. It can be described as a small form of the Dutch or Spanish Iris. Its main value lies in the fact that it can be forced into bloom in the house with the greatest ease. Six or eight bulbs put into a 4- to 5-inch pot when received will bloom about Christmas time. The fragrant blossoms remind one of a bunch of fresh violets. Perfectly hardy with reasonable protection. It is one of the loveliest early flowering bulbs for the rockery. 3 for 80c; \$2.65 per doz.; \$20.00 per 100.

DEEP PLANTING METHOD FOR TULIPS

During the past several years we have conducted several tests on our nurseries in Holland, Michigan, using different planting methods for Tulips, in order to find out which is the most satisfactory.

You Tulip lovers who balk at the thought of digging up and replanting your Tulips every year or two, will be glad to know that from the results of these tests we have found conclusively that the deep method of planting is far superior to any other. And by using this method, your Tulip planting is almost permanent!

When you plant your Tulips shallow the bulbs have a tendency to split up into several divisions, usually too small to produce bloom. This method is fine when used by growers for propagation purposes, but Mr. Average Gardener wants flowers! Therefore, plant deeper. Give this method a trial.

By planting deep, we mean 9 to 10 inches in heavy soil, or 12 to 14 inches in lighter soil. The bulbs do not split so readily, and remain of blooming size much longer. Also, if you've had your plantings ruined by inroads of mice and moles, another difficulty has been overcome, because they seldom work at that depth, and the bulbs are beyond their reach.

If you have not already ordered our booklet, "The Tulip—Its Culture and Care," written by Mr. Harry Nelis, we would suggest that you do so now. It is specially priced to our customers at 10 cents, and gives specific and detailed information on all phases of Tulip planting.



Lilium Regale—The Regal Lily



Lilium Umbellatum Davuricum Erectum



Lilium tenuifolium

Aristocratic Hardy

Regal Lily. Regals give your garden a final touch of beauty. A wonderful new and hardy Lily, native to Northern China, and very easily grown. Grows 4 to 5 feet tall. Flowers are ivory-white, trumpet-shaped, with soft yellow throat; very fragrant. Bloom in July. Will give increased beauty for many years without transplanting.

Special Low Prices for Fall Planting:

	6	12	100
4 to 6 inches in circum.	\$1.00	\$1.75	\$13.50
6 to 8 inches in circum.	1.65	3.00	22.00
8 inches and up . . . 3 for	\$1.50;	5.00	

Lilium Candidum (Madonna Lily). Also known by many as "June Lilies." This is one of the oldest, loveliest and best known Lilies. It is the earliest outdoor garden Lily. You have often admired it, with its rich perfume and snow-white flowers, from 3 to 15' on a stem. It is very hardy, and will thrive in any light garden soil, with plenty of light and air. **Largest size bulbs, \$1.50 per 3; \$5.00 per doz.; \$38.00 per 100. Medium size bulbs, \$1.10 per 3; \$3.75 per doz.; \$28.00 per 100.**

Lilium Michiganis. Graceful orange flowers; beautiful native Lily of Michigan. Under ideal conditions it grows from 6 to 7 feet high; very hardy, and easily established. **3 for 90c; \$3.00 per doz.**

Lilium Michiganis, Yellow. Yellow form of the above, same habits of growth. **3 for 90c; \$3.00 per doz.**

Lilium Pardalinum Californicum. Deep orange blossoms, spotted with maroon, large, recurved petals tipped scarlet. Blooms in July, hardy and robust, does well in any garden soil. Reaches a height of 7 feet, often carrying as many as 15 to 20 blooms, with dark green foliage. Produces a succession of bloom for two or three weeks. **55c each; 3 for \$1.50; \$5.00 per doz.**



Lilium Speciosum Rubrum



Lilium Candidum

GARDEN LILIES

Lilium Speciosum Rubrum. White, tinted and heavily spotted red; the showiest Lily in this color class. 65c each; 3 for \$3.75; \$6.00 per doz.

Lilium Tenuifolium. A dainty little Lily with slender stems and grassy foliage, blooming in June or July, producing numerous showy scarlet flowers with reflexing petals. Prefers a sunny location in well drained soil. 3 for 75c; \$2.60 per doz.

Tiger Lily. A remarkable, handsome Lily of easy culture, producing an abundance of large, showy, brilliantly colored flowers in August and September; very hardy. Rich orange-scarlet flowers, spotted crimson-brown. Height 5 feet. 3 for 80c; \$2.75 per doz.

Double Tiger Lily. The double form of the single Tiger Lily. It is the best form of Double Lilies today. Blooms in August and September. Height 5 feet. 3 for \$1.35; \$4.50 per doz.

Lilium Umbellatum Davuricum Erectum. A very free flowering Lily of easy culture, carries a large mass of light orange-red flowers. Prefers a cool shady position. This variety is very scarce. 3 for \$1.65; \$6.00 per doz.

Lilium Downingi

The best pure white hardy garden Lily, a cross between *Lilium Regale* and *Lilium Longifolium*. Covered by Plant Patent No. 436. Bears long, pure white flowers of exquisite form on a 20-inch stem during July. Free from mosaic diseases to which so many of our present-day Lilies are susceptible. Be one of the first to try this outstanding new Lily in your garden. For fall planting only. **Special Introductory Price:** 3 for \$1.35; \$4.50 per doz.



Lilium Pardalinum Californicum

EXQUISITE *Iris Kaempferi*

*Absolutely Unsurpassed
for All-round!
Usefulness* ♦

These enormous Iris, carried on tall, straight stems, make a splendid background for a pool, where their reflected beauty doubles the enjoyment derived from them. Or plant them in groups or masses in the border, where their gorgeous colors are unrivaled! Perfect for cutting, the ancient poets called these Iris "Ground Rainbows." Average height 3 to 5 feet.

Culture: Plant in spring or fall. Protect late fall plantings with a light covering of straw or leaves, after the ground is permanently frozen, to prevent heaving. A heavy application of fertilizer is beneficial, and either fresh or dried manure may be used. Once established they flower profusely year after year.

	Each	Three	Doz.
BETTY JEAN CHILDS. Single, white, faintly splashed and veined purple. Petaloids deep purple	\$0.35	\$1.00	\$3.50
CAPRICE. Single. Sometimes a solid lavender-blue, but more often striped and mottled35	1.00	3.50
DOMINATOR. Single. Rich indigo-blue with narrow white stripes and lighter center. One of the finest and richest colors40	1.10	3.75
ELBRUS. Double. A recent introduction, which we consider the best of all the clear lavenders. Exceptionally large, six-petaled40	1.10	3.75
ETHEL J. MARSHALL. Single. Ivory-white splashed and veined with dull bluish violet. Petaloids aconite-violet edged white. Stigmas ivory-white edged violet ..	.40	1.10	3.75
GEKKO-NO-NAMI. Double. Dense, pure white, with yellow center35	1.00	3.50
GOLD BOUND. A fine double of pure white, with cream glow at gold-banded center. Heavy, firm petals that seem to be formed of wax40	1.10	3.75
JEANNETTE PARRY. Single. White suffused with lines of bluish violet, petaloid stigmas amethyst-violet35	1.00	3.75
LUCIE MARSHALL. Gigantic double of pansy-violet, with a white throat area with yellow blotch. Petals veined with white35	1.00	3.75
MRS. J. ALEXANDER HAYDEN. Double. White ground edged and shaded pale violet. Stigmas white, slightly edged and tipped pale violet40	1.10	3.75
PAINTED LADY. Single white, center blotched light phlox-purple, tufts white with phlox-purple edge35	1.00	3.75
PYRAMID. A magnificent double to triple deep blue-purple, with white veins and yellow throat in striking contrast35	1.00	3.75
RED RIDING HOOD. A fine single amaranth, veined and suffused white. A color combination hard to find ..	.40	1.10	3.75
T. S. WARE. Double, reddish violet flowers of large size, veined white. White center, slightly marked lemon35	1.00	3.75
VIOLET GIANT. Single, reddish purple flower with a conspicuous yellow blotch, dark veins. Extra fine and large35	1.00	3.75



Red Riding Hood

IRIS KAEMPFERI Collection

1 each of 15 varieties, labeled (15 plants) \$ 3.75

3 each of 15 varieties, labeled (45 plants) 11.00

SPECIAL

8 plants, unlabeled, 8 distinct types, our selection, for
\$2.00



T. S. Ware



Pyramid

Nature's Way to a Productive Soil

Superior Brand Peat Moss

Plants are living, growing things, and need a congenial environment. This means a favorable climate, and more important still, a correct soil. Soil is made up of two kinds of material; mineral or inorganic; and vegetable or organic. Both are essential sources of plant food, but the organic material (called humus) plays by far the most important part. Peat Moss is the most desirable type of humus known. It is pure vegetable matter that improves soils that are too sandy by giving them body and coherence, and it gives life and porousness to heavy soil.

Superior Brand Peat Moss is excellent as a mulch. A layer of the loose, fluffy material on top of the ground will greatly check evaporation. Applied from one to five inches deep it conserves soil moisture and prevents erosion. In winter it protects plant roots from severe cold.

Superior Brand Peat Moss is sold in bags, each containing two bushels. We will ship by freight, charges collect, unless you instruct otherwise. Shipping weight per bag of two bushels, about 50 pounds.



1 bag (2 bushels) . . .	\$0.99	4 bags (8 bushels)	\$3.37
2 bags (4 bushels) . . .	\$1.77	1 cubic yard (22 bushels)	\$6.50
3 bags (6 bushels) . . .	\$2.57		

2-Way Money-Saving. Two bags (about 100 lbs.), can be shipped as cheaply as one bag, since freight companies make no reductions under 100 pounds; thus you save on freight when two bags are ordered. And when you order two bags you pay only 78c for the extra bag. Order two or more bags, and save money.

Vitamin Cartridges

Luxuriant Lawns and Gardens
THIS NEW EASY WAY

THE NEW VITAMINE CARTRIDGE

VITAMIST
VITAMIZE AS YOU SPRINKLE

NO SPECIAL NOZZLE NO SPRAYER NO EXTRA ATTACHMENTS TO BUY

NEW—simple, easy, quick way to VITAMIZE your entire lawn and garden. Assure yourself of gorgeous, luxuriant flowers and a beautiful, attractive lawn that will be the envy of your friends and neighbors.

NO FUSS—NO MESS—NO BOTHER

Simply remove the nozzle from your garden hose, drop a VITAMIST Cartridge into the hose, replace the nozzle and turn on the water. **NOTHING ELSE LIKE IT.** One Cartridge will VITAMIZE 1,500 square feet.

THIRTY WEEKS' SUPPLY - - - Postpaid

Packed 30 cartridges in a box—enough to VITAMIZE 1,500 square feet once a week for thirty weeks.

\$100

For critical Tulip lovers, who do not find listed in this catalog the varieties in which they are interested: Write for our field planting list, which gives the names of over 500 varieties, with height and short color description. This folder contains no illustrations, as it is used during the blooming time, when pictures are not needed.

NELIS NURSERIES, Inc., Holland, Mich.